

LCP1 Antibody

Catalog No: #32912

Package Size: #32912-1 50ul #32912-2 100ul

Orders: order@signalwayantibody.com

Support: tech@signalwayantibody.com

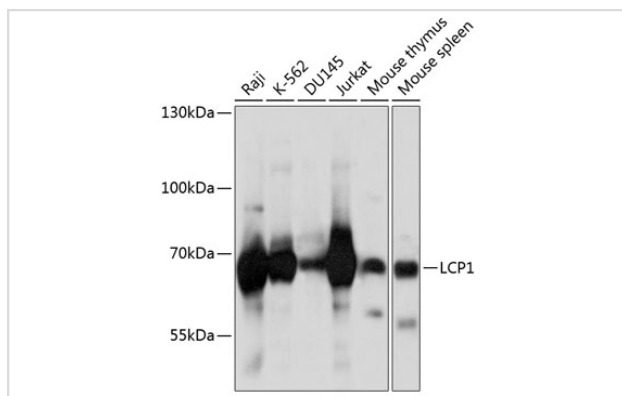
Description

Product Name	LCP1 Antibody
Host Species	Rabbit
Clonality	Polyclonal
Purification	Antibodies were purified by affinity purification using immunogen.
Applications	WB
Species Reactivity	Human,Mouse
Specificity	The antibody detects endogenous level of total LCP1 protein.
Immunogen Type	Recombinant Protein
Immunogen Description	Recombinant protein of human LCP1.
Target Name	LCP1
Other Names	LPL; CP64; PLS2; LC64P; L-PLASTIN
Accession No.	Swiss-Prot:P13796NCBI Gene ID:3936
Uniprot	P13796
GeneID	3936;
SDS-PAGE MW	70KD
Concentration	1.0mg/ml
Formulation	Supplied at 1.0mg/mL in phosphate buffered saline (without Mg ²⁺ and Ca ²⁺), pH 7.4, 150mM NaCl, 0.02% sodium azide and 50% glycerol.
Storage	Store at -20°C

Application Details

WB □ 1:500 - 1:2000IP □ 1:20 - 1:50

Images



Western blot analysis of extracts of various cell lines, using LCP1 at 1:1000 dilution.

Background

Plastins are a family of actin-binding proteins that are conserved throughout eukaryote evolution and expressed in most tissues of higher eukaryotes. In humans, two ubiquitous plastin isoforms (L and T) have been identified. Plastin 1 (otherwise known as Fimbrin) is a third distinct plastin isoform which is specifically expressed at high levels in the small intestine. The L isoform is expressed only in hemopoietic cell lineages, while the T isoform has been found in all other normal cells of solid tissues that have replicative potential (fibroblasts, endothelial cells, epithelial cells, melanocytes, etc.). However, L-plastin has been found in many types of malignant human cells of non-hemopoietic origin suggesting that its expression is induced accompanying tumorigenesis in solid tissues.

Note: This product is for in vitro research use only