

## SH2B1 Antibody

Catalog No: #32915

Package Size: #32915-1 50ul #32915-2 100ul

Orders: [order@signalwayantibody.com](mailto:order@signalwayantibody.com)Support: [tech@signalwayantibody.com](mailto:tech@signalwayantibody.com)

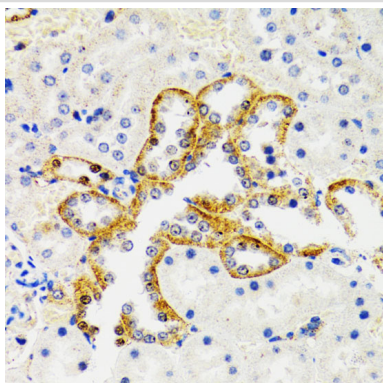
## Description

Product Name	SH2B1 Antibody
Host Species	Rabbit
Clonality	Polyclonal
Isotype	IgG
Purification	Affinity purification
Applications	IHC,IF
Species Reactivity	Human,Mouse,Rat
Specificity	The antibody detects endogenous level of total SH2B1 protein.
Immunogen Type	Recombinant Protein
Immunogen Description	Recombinant fusion protein of human SH2B1 (NP_056318.2).
Target Name	SH2B1
Other Names	SH2B1;PSM;SH2B
Accession No.	Uniprot:Q9NRF2GeneID:25970
Uniprot	Q9NRF2
GeneID	25970
SDS-PAGE MW	/
Concentration	1.0mg/ml
Formulation	PBS with 0.02% sodium azide,50% glycerol,pH7.3.
Storage	Store at -20°C. Avoid freeze / thaw cycles.

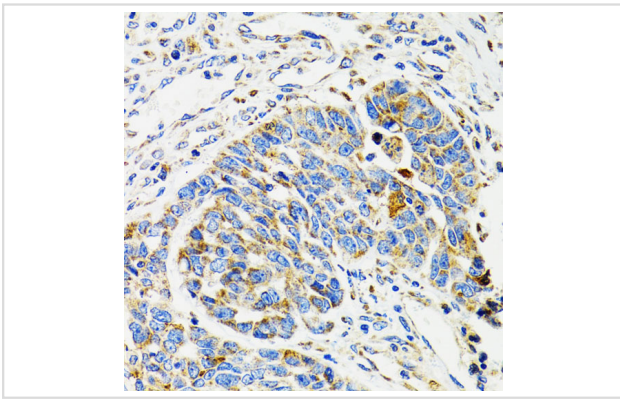
## Application Details

IHC□1:50 - 1:200IF□1:20 - 1:50

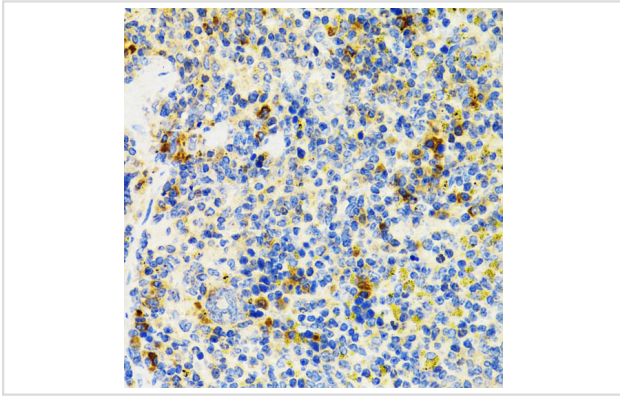
## Images



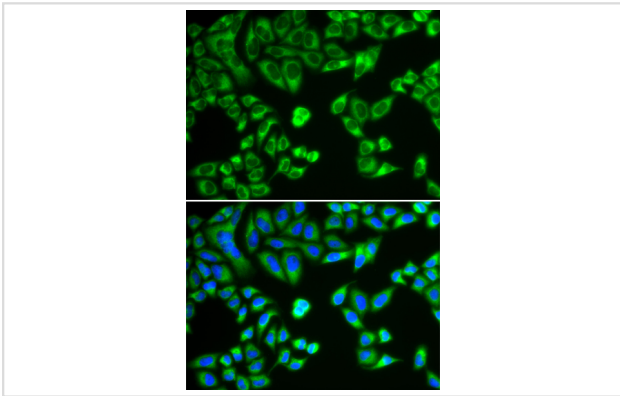
Immunohistochemistry of paraffin-embedded rat kidney using SH2B1 Antibody.



Immunohistochemistry of paraffin-embedded human esophageal cancer using SH2B1 Antibody.



Immunohistochemistry of paraffin-embedded mouse spleen using SH2B1 Antibody.



Immunofluorescence analysis of HeLa cells using SH2B1 antibody.

## Background

This gene encodes a member of the SH2-domain containing mediators family. The encoded protein mediates activation of various kinases and may function in cytokine and growth factor receptor signaling and cellular transformation. Alternatively spliced transcript variants have been described.

Note: This product is for in vitro research use only