

HPX Antibody

Catalog No: #32919

Package Size: #32919-1 50ul #32919-2 100ul

Orders: order@signalwayantibody.com

Support: tech@signalwayantibody.com

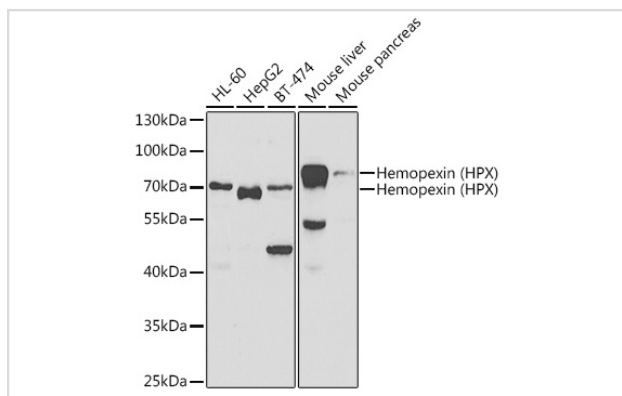
Description

Product Name	HPX Antibody
Host Species	Rabbit
Clonality	Polyclonal
Isotype	IgG
Purification	Affinity purification
Applications	WB
Species Reactivity	Human,Mouse,Rat
Specificity	The antibody detects endogenous level of total HPX protein.
Immunogen Type	Recombinant Protein
Immunogen Description	Recombinant fusion protein of human Hemopexin (Hemopexin (HPX)) (NP_000604.1).
Target Name	HPX
Other Names	HPX;HX;hemopexin
Accession No.	Uniprot:P02790GenID:3263
Uniprot	P02790
GenID	3263
SDS-PAGE MW	68kDa
Concentration	1.0mg/ml
Formulation	PBS with 0.02% sodium azide,50% glycerol,pH7.3.
Storage	Store at -20°C. Avoid freeze / thaw cycles.

Application Details

WB 1:500 - 1:2000

Images



Western blot analysis of extracts of various cell lines, using Hemopexin (Hemopexin (HPX)) antibody.

Background

This gene encodes a plasma glycoprotein that binds heme with high affinity. The encoded protein is an acute phase protein that transports heme from the plasma to the liver and may be involved in protecting cells from oxidative stress.

Note: This product is for in vitro research use only