

## MAP1LC3A Antibody

Catalog No: #32926

Package Size: #32926-1 50ul #32926-2 100ul

Orders: order@signalwayantibody.com

Support: tech@signalwayantibody.com

## Description

Product Name	MAP1LC3A Antibody
Host Species	Rabbit
Clonality	Polyclonal
Purification	Antibodies were purified by affinity purification using immunogen.
Applications	WB IHC IF
Species Reactivity	Hu Ms Rt
Specificity	The antibody detects endogenous level of total MAP1LC3A protein.
Immunogen Type	Recombinant Protein
Immunogen Description	Recombinant protein of human MAP1LC3A.
Target Name	MAP1LC3A
Other Names	LC3; LC3A; ATG8E; MAP1ALC3; MAP1BLC3
Accession No.	Swiss-Prot:Q9H492NCBI Gene ID:84557
Uniprot	Q9H492
GeneID	84557;
SDS-PAGE MW	14KD
Concentration	1.0mg/ml
Formulation	Supplied at 1.0mg/mL in phosphate buffered saline (without Mg <sup>2+</sup> and Ca <sup>2+</sup> ), pH 7.4, 150mM NaCl, 0.02% sodium azide and 50% glycerol.
Storage	Store at -20°C

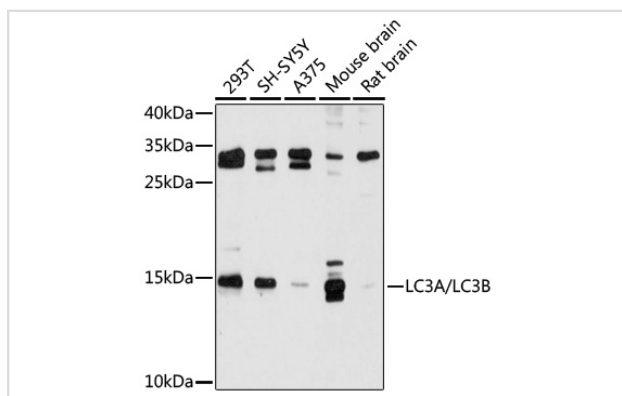
## Application Details

Western blotting: 1:500 - 1:2000

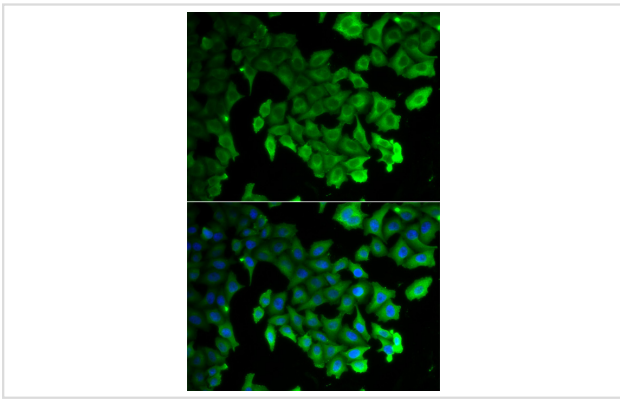
Immunohistochemistry: 1:50 - 1:200

Immunofluorescence: 1:50 - 1:200

## Images



Western blot analysis of extracts of various cell lines, using LC3A/LC3B antibody at 1:500 dilution.



Immunofluorescence analysis of HeLa cells using LC3A/LC3B antibody.

## Background

MAP1A and MAP1B are microtubule-associated proteins which mediate the physical interactions between microtubules and components of the cytoskeleton. MAP1A and MAP1B each consist of a heavy chain subunit and multiple light chain subunits. The protein encoded by this gene is one of the light chain subunits and can associate with either MAP1A or MAP1B. Two transcript variants encoding different isoforms have been found for this gene. The expression of variant 1 is suppressed in many tumor cell lines, suggesting that may be involved in carcinogenesis.

Note: This product is for in vitro research use only