

ROR2 Antibody

Catalog No: #32928

Package Size: #32928-1 50ul #32928-2 100ul

Orders: order@signalwayantibody.com

Support: tech@signalwayantibody.com

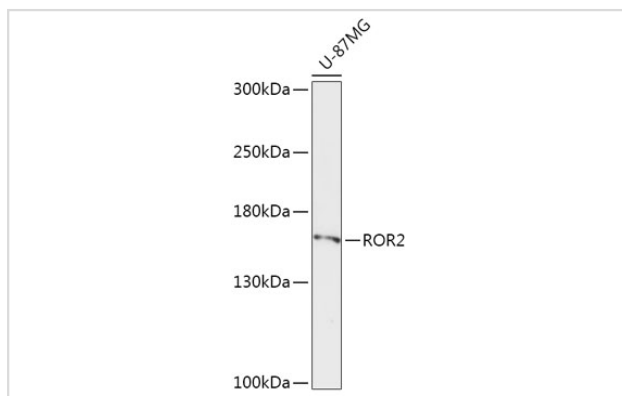
Description

Product Name	ROR2 Antibody
Host Species	Rabbit
Clonality	Polyclonal
Purification	Antibodies were purified by affinity purification using immunogen.
Applications	WB,IHC
Species Reactivity	Human,Mouse,Rat
Specificity	The antibody detects endogenous level of total ROR2 protein.
Immunogen Type	Recombinant Protein
Immunogen Description	Recombinant protein of human ROR2.
Target Name	ROR2
Other Names	BDB; BDB1; NTRKR2;
Accession No.	Swiss-Prot:Q01974NCBI Gene ID:4920
Uniprot	Q01974
GeneID	4920;
SDS-PAGE MW	104KD
Concentration	1.0mg/ml
Formulation	Supplied at 1.0mg/mL in phosphate buffered saline (without Mg ²⁺ and Ca ²⁺), pH 7.4, 150mM NaCl, 0.02% sodium azide and 50% glycerol.
Storage	Store at -20°C

Application Details

WB □ 1:500 - 1:2000 IHC □ 1:100 - 1:200

Images



Western blot analysis of extracts of U-87MG cells, using ROR2 at 1:1000 dilution.

Background

The protein encoded by this gene is a receptor protein tyrosine kinase and type I transmembrane protein that belongs to the ROR subfamily of cell surface receptors. The protein may be involved in the early formation of the chondrocytes and may be required for cartilage and growth plate development. Mutations in this gene can cause brachydactyly type B, a skeletal disorder characterized by hypoplasia/aplasia of distal phalanges and nails. In addition, mutations in this gene can cause the autosomal recessive form of Robinow syndrome, which is characterized by skeletal dysplasia with generalized limb bone shortening, segmental defects of the spine, brachydactyly, and a dysmorphic facial appearance.

Note: This product is for in vitro research use only