

GNRH1 Antibody

Catalog No: #32930

Package Size: #32930-1 50ul #32930-2 100ul

Orders: order@signalwayantibody.com

Support: tech@signalwayantibody.com

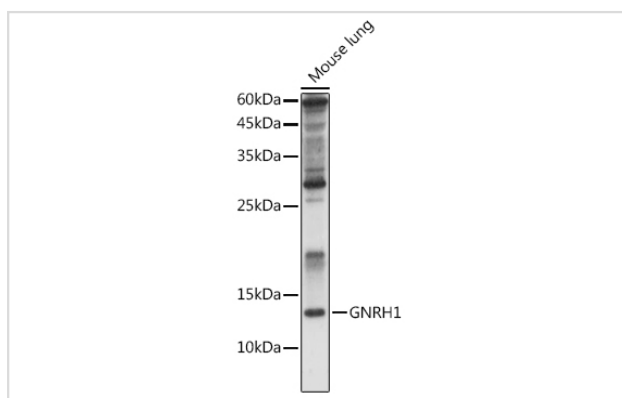
Description

Product Name	GNRH1 Antibody
Host Species	Rabbit
Clonality	Polyclonal
Isotype	IgG
Purification	Affinity purification
Applications	WB,IF
Species Reactivity	Human,Mouse,Rat
Specificity	The antibody detects endogenous level of total GNRH1 protein.
Immunogen Type	Recombinant Protein
Immunogen Description	Recombinant fusion protein of human GNRH1 (NP_001076580.1).
Target Name	GNRH1
Other Names	GNRH1;GNRH;GRH;LHRH;LNRH
Accession No.	Uniprot:P01148GeneID:2796
Uniprot	P01148
GeneID	2796
SDS-PAGE MW	12KDa
Concentration	1.0mg/ml
Formulation	PBS with 0.02% sodium azide,50% glycerol,pH7.3.
Storage	Store at -20°C. Avoid freeze / thaw cycles.

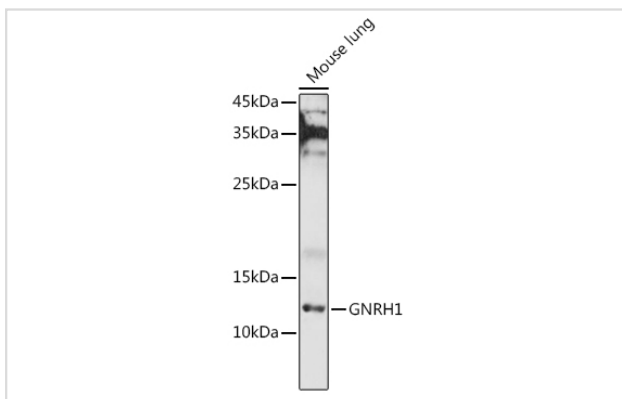
Application Details

WB □ 1:500 - 1:2000 IF □ 1:50 - 1:200

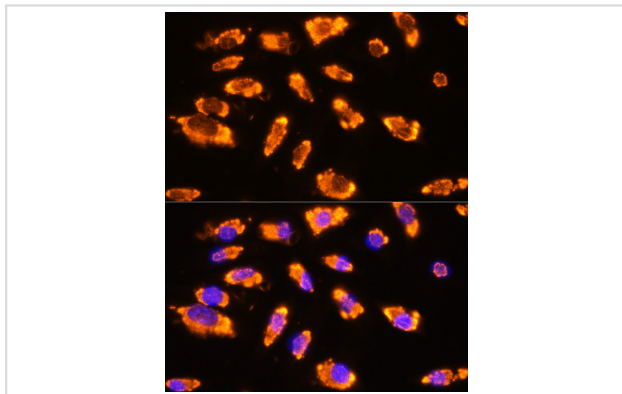
Images



Western blot analysis of extracts of Rat kidney, using GNRH1 antibody.



Western blot analysis of extracts of Mouse lung, using GNRH1 antibody.



Immunofluorescence analysis of L929 cells using GNRH1 Rabbit pAb.

Background

This gene encodes a preproprotein that is proteolytically processed to generate a peptide that is a member of the gonadotropin-releasing hormone (GnRH) family of peptides. Alternative splicing results in multiple transcript variants, at least one of which is secreted and then cleaved to generate gonadoliberin-1 and GnRH-associated peptide 1. Gonadoliberin-1 stimulates the release of luteinizing and follicle stimulating hormones, which are important for reproduction. Mutations in this gene are associated with hypogonadotropic hypogonadism.

Note: This product is for in vitro research use only