

FLI1 Antibody

Catalog No: #32943

Package Size: #32943-1 50ul #32943-2 100ul

Orders: order@signalwayantibody.comSupport: tech@signalwayantibody.com

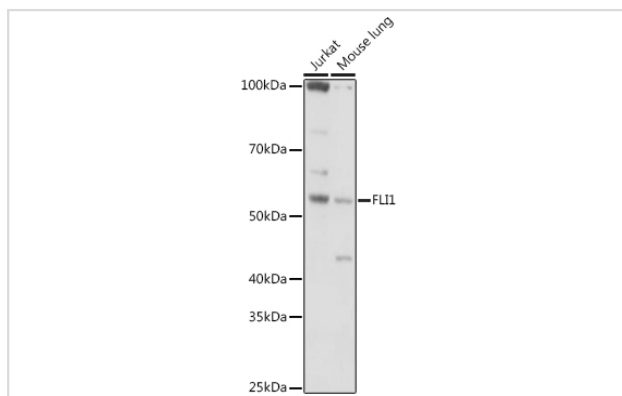
Description

Product Name	FLI1 Antibody
Host Species	Rabbit
Clonality	Polyclonal
Isotype	IgG
Purification	Affinity purification
Applications	WB
Species Reactivity	Human,Mouse
Specificity	The antibody detects endogenous level of total FLI1 protein.
Immunogen Type	Recombinant Protein
Immunogen Description	Recombinant fusion protein of human FLI1 (NP_002008.2).
Target Name	FLI1
Other Names	FLI1;EWSR2;SIC-1;BDPLT21
Accession No.	Uniprot:Q01543GeneID:2313
Uniprot	Q01543
GeneID	2313
SDS-PAGE MW	51KDa
Concentration	1.0mg/ml
Formulation	PBS with 0.02% sodium azide,50% glycerol,pH7.3.
Storage	Store at -20°C. Avoid freeze / thaw cycles.

Application Details

WB □ 1:500 - 1:2000

Images



Western blot analysis of extracts of various cell lines, using .

Background

This gene encodes a transcription factor containing an ETS DNA-binding domain. The gene can undergo a t(11;22)(q24;q12) translocation with the Ewing sarcoma gene on chromosome 22, which results in a fusion gene that is present in the majority of Ewing sarcoma cases. An acute lymphoblastic leukemia-associated t(4;11)(q21;q23) translocation involving this gene has also been identified. Alternative splicing results in multiple transcript variants.

Note: This product is for in vitro research use only