

MECOM Antibody

Catalog No: #32966

Package Size: #32966-1 50ul #32966-2 100ul

Orders: order@signalwayantibody.com

Support: tech@signalwayantibody.com

Description

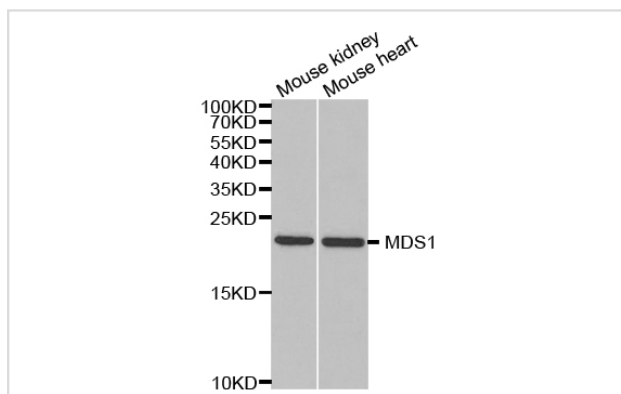
Product Name	MECOM Antibody
Host Species	Rabbit
Clonality	Polyclonal
Purification	Antibodies were purified by affinity purification using immunogen.
Applications	WB IHC
Species Reactivity	Hu
Specificity	The antibody detects endogenous level of total MECOM protein.
Immunogen Type	Recombinant Protein
Immunogen Description	Recombinant protein of human MECOM.
Target Name	MECOM
Other Names	EVI1; MDS1; PRDM3; MDS1-EVI1; AML1-EVI-1
Accession No.	Swiss-Prot:Q13465NCBI Gene ID:2122
Uniprot	Q03112
GeneID	2122;
SDS-PAGE MW	18KD
Concentration	1.0mg/ml
Formulation	Supplied at 1.0mg/mL in phosphate buffered saline (without Mg ²⁺ and Ca ²⁺), pH 7.4, 150mM NaCl, 0.02% sodium azide and 50% glycerol.
Storage	Store at -20°C

Application Details

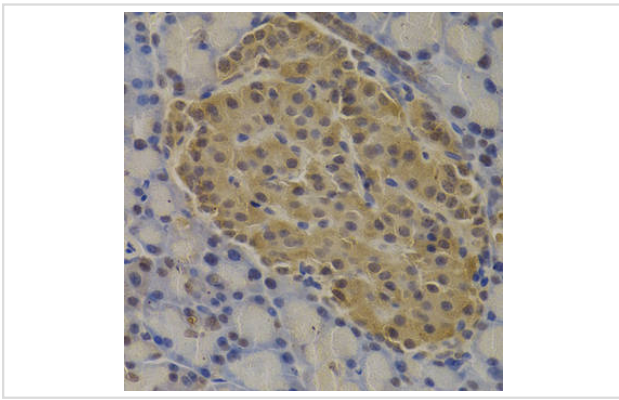
Western blotting: 1:500 - 1:2000

Immunohistochemistry: 1:50 - 1:200

Images



Western blot analysis of extracts of various cell lines, using MECOM antibody.



Immunohistochemistry of paraffin-embedded rat pancreas using MECOM antibody at dilution of 1:200 (400x lens).

Background

The protein encoded by this gene is a transcriptional regulator and oncoprotein that may be involved in hematopoiesis, apoptosis, development, and cell differentiation and proliferation. The encoded protein can interact with CTBP1, SMAD3, CREBBP, KAT2B, MAPK8, and MAPK9. This gene can undergo translocation with the AML1 gene, resulting in overexpression of this gene and the onset of leukemia. Several transcript variants encoding a few different isoforms have been found for this gene.

Note: This product is for in vitro research use only