

RBPJ Antibody

Catalog No: #32967

Package Size: #32967-1 50ul #32967-2 100ul

Orders: order@signalwayantibody.comSupport: tech@signalwayantibody.com

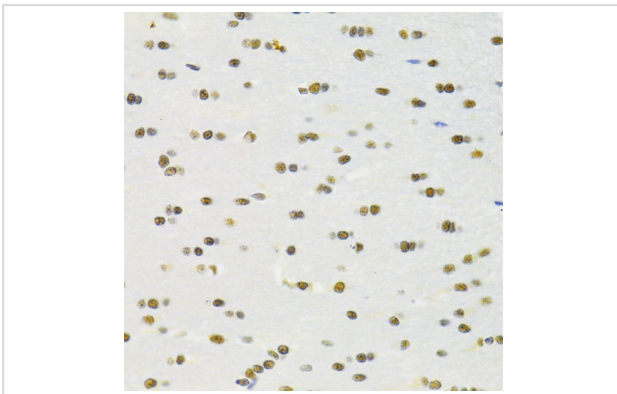
Description

Product Name	RBPJ Antibody
Host Species	Rabbit
Clonality	Polyclonal
Isotype	IgG
Purification	Affinity purification
Applications	WB,IHC
Species Reactivity	Human,Mouse,Rat
Specificity	The antibody detects endogenous level of total RBPJ protein.
Immunogen Type	Recombinant Protein
Immunogen Description	Recombinant fusion protein of human RBPJKB (NP_976028.1).
Target Name	RBPJ
Other Names	RBPJ;AOS3;CBF1;IGKJRB;IGKJRB1;KBF2;RBP-J;RBPJK;RBPSUH;SUH;csf
Accession No.	Uniprot:Q06330GeneID:3516
Uniprot	Q06330
GeneID	3516
SDS-PAGE MW	61KDa
Concentration	1.0mg/ml
Formulation	PBS with 0.02% sodium azide,50% glycerol,pH7.3.
Storage	Store at -20°C. Avoid freeze / thaw cycles.

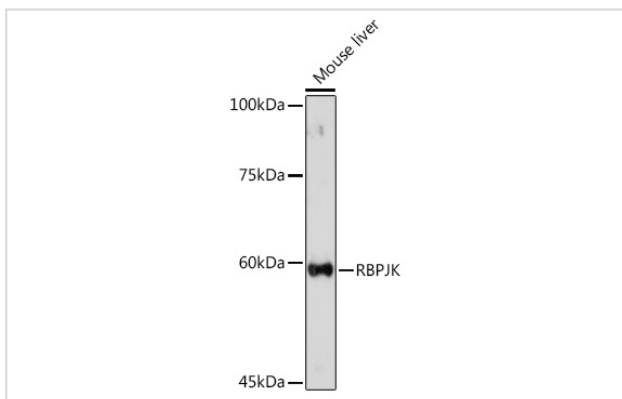
Application Details

WB 1:500 - 1:2000 IHC 1:50 - 1:200

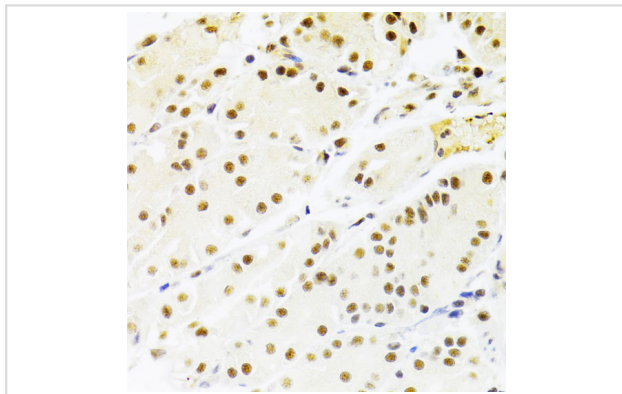
Images



Immunohistochemistry of paraffin-embedded rat brain using RBPJKB Antibody.



Western blot analysis of extracts of Mouse liver, using RBPJKK Rabbit pAb.



Immunohistochemistry of paraffin-embedded human stomach using RBPJKK Antibody.

Background

The protein encoded by this gene is a transcriptional regulator important in the Notch signaling pathway. The encoded protein acts as a repressor when not bound to Notch proteins and an activator when bound to Notch proteins. It is thought to function by recruiting chromatin remodeling complexes containing histone deacetylase or histone acetylase proteins to Notch signaling pathway genes. Several transcript variants encoding different isoforms have been found for this gene, and several pseudogenes of this gene exist on chromosome 9.

Note: This product is for in vitro research use only