

## LC3a Antibody

Catalog No: #21402

Package Size: #21402-1 50ul #21402-2 100ul

Orders: order@signalwayantibody.com

Support: tech@signalwayantibody.com

## Description

Product Name	LC3a Antibody
Host Species	Rabbit
Clonality	Polyclonal
Purification	Antibodies were produced by immunizing rabbits with synthetic peptide and KLH conjugates. Antibodies were purified by affinity-chromatography using epitope-specific peptide.
Applications	WB IF
Species Reactivity	Hu Ms Rt
Specificity	The antibody detects endogenous level of total LC3A protein.
Immunogen Type	Peptide-KLH
Immunogen Description	Peptide sequence around aa.5~10 (R-P-F-K-Q) derived from Human LC3A.
Target Name	LC3a
Other Names	Microtubule-associated protein 1 light chain 3 alpha; MAP1A/1B light chain 3 A; MAP1A/MAP1B LC3 A; MAP1 light chain 3-like protein 1; Autophagy-related protein LC3 A
Accession No.	Swiss-Prot: Q9H492NCBI Protein: NP_115903.1
Uniprot	Q9H492
GeneID	84557;
Concentration	1.0mg/ml
Formulation	Supplied at 1.0mg/mL in phosphate buffered saline (without Mg <sup>2+</sup> and Ca <sup>2+</sup> ), pH 7.4, 150mM NaCl, 0.02% sodium azide and 50% glycerol.
Storage	Store at -20°C for long term preservation (recommended). Store at 4°C for short term use.

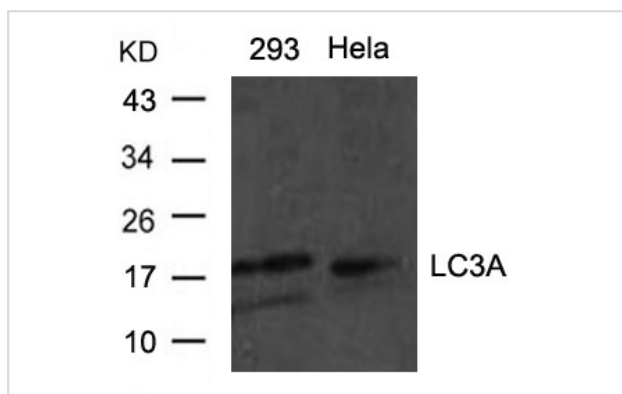
## Application Details

Predicted MW: 18 16 kd

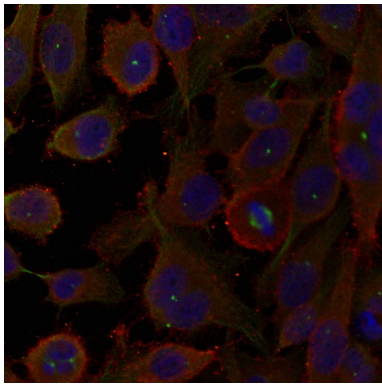
Western blotting: 1:500~1:1000

Immunofluorescence: 1:100~1:200

## Images



Western blot analysis of extracts from HeLa and 293 cells using LC3A antibody #21402.



Immunofluorescence staining of methanol-fixed HeLa cells using LC3A antibody #21402.

## Background

---

Probably involved in formation of autophagosomal vacuoles (autophagosomes).

---

Note: This product is for in vitro research use only