

FH Antibody

Catalog No: #32975

Package Size: #32975-1 50ul #32975-2 100ul

Orders: order@signalwayantibody.comSupport: tech@signalwayantibody.com

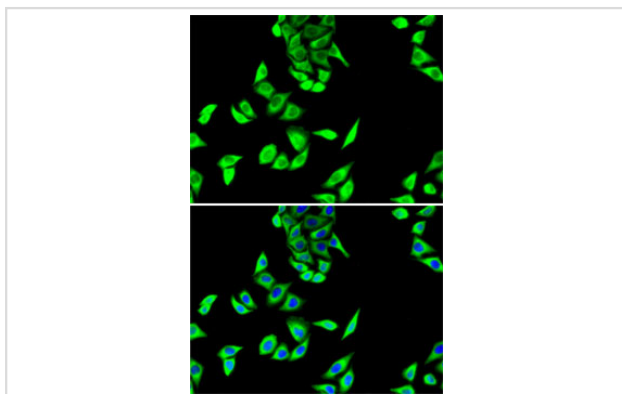
Description

Product Name	FH Antibody
Host Species	Rabbit
Clonality	Polyclonal
Isotype	IgG
Purification	Affinity purification
Applications	WB,IHC,IF
Species Reactivity	Human,Mouse,Rat
Specificity	The antibody detects endogenous level of total FH protein.
Immunogen Type	Recombinant Protein
Immunogen Description	Recombinant fusion protein of human FH (NP_000134.2).
Target Name	FH
Other Names	FH;FMRD;HLRCC;LRCC;MCL;MCUL1
Accession No.	Uniprot:P07954GeneID:2271
Uniprot	P07954
GeneID	2271
SDS-PAGE MW	50kDa
Concentration	1.0mg/ml
Formulation	PBS with 0.02% sodium azide,50% glycerol,pH7.3.
Storage	Store at -20°C. Avoid freeze / thaw cycles.

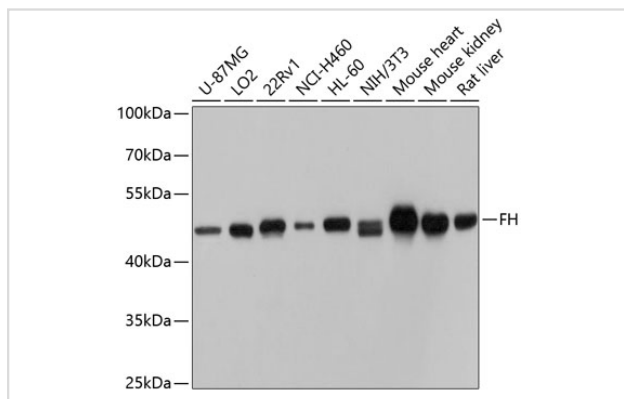
Application Details

WB 1:500 - 1:2000 IHC 1:50 - 1:200 IF 1:50 - 1:100

Images



Immunofluorescence analysis of U2OS cells using FH antibody.



Western blot analysis of extracts of various cell lines, using FH antibody.

Background

The protein encoded by this gene is an enzymatic component of the tricarboxylic acid (TCA) cycle, or Krebs cycle, and catalyzes the formation of L-malate from fumarate. It exists in both a cytosolic form and an N-terminal extended form, differing only in the translation start site used. The N-terminal extended form is targeted to the mitochondrion, where the removal of the extension generates the same form as in the cytoplasm. It is similar to some thermostable class II fumarases and functions as a homotetramer. Mutations in this gene can cause fumarase deficiency and lead to progressive encephalopathy.

Note: This product is for in vitro research use only