

## SH3GL2 Antibody

Catalog No: #32985

Package Size: #32985-1 50ul #32985-2 100ul

Orders: [order@signalwayantibody.com](mailto:order@signalwayantibody.com)Support: [tech@signalwayantibody.com](mailto:tech@signalwayantibody.com)

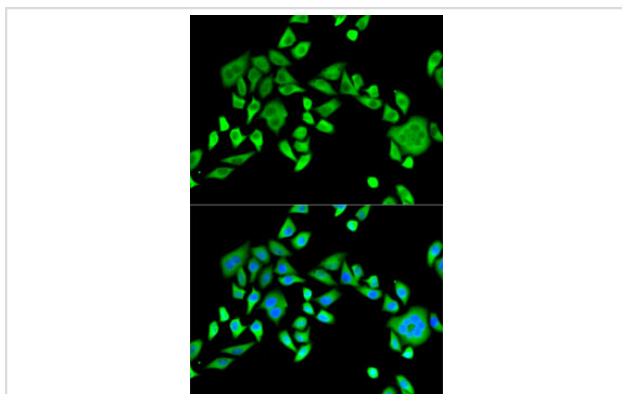
## Description

Product Name	SH3GL2 Antibody
Host Species	Rabbit
Clonality	Polyclonal
Purification	Antibodies were purified by affinity purification using immunogen.
Applications	WB,IF
Species Reactivity	Human,Mouse
Specificity	The antibody detects endogenous level of total SH3GL2 protein.
Immunogen Type	Recombinant Protein
Immunogen Description	Recombinant protein of human SH3GL2.
Target Name	SH3GL2
Other Names	CNSA2; SH3P4; EEN-B1; SH3D2A;
Accession No.	Swiss-Prot:Q99962NCBI Gene ID:6456
Uniprot	Q99962
GeneID	6456;
SDS-PAGE MW	39KD
Concentration	1.0mg/ml
Formulation	Supplied at 1.0mg/mL in phosphate buffered saline (without Mg <sup>2+</sup> and Ca <sup>2+</sup> ), pH 7.4, 150mM NaCl, 0.02% sodium azide and 50% glycerol.
Storage	Store at -20°C

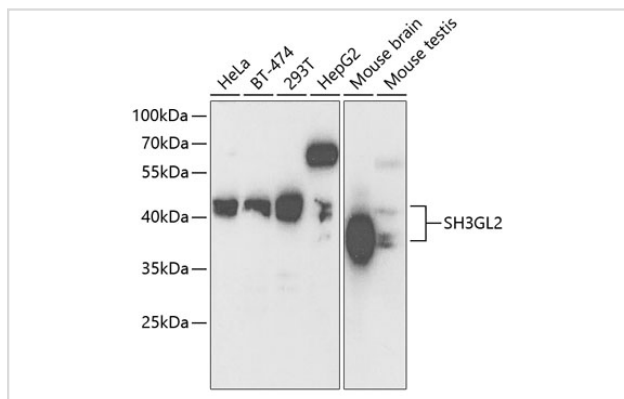
## Application Details

WB □ 1:500 - 1:2000IF □ 1:50 - 1:200

## Images



Immunofluorescence analysis of HeLa cells using SH3GL2 .  
Blue: DAPI for nuclear staining.



Western blot analysis of extracts of various cell lines, using SH3GL2 at 1:1000 dilution.

## Background

Implicated in synaptic vesicle endocytosis. May recruit other proteins to membranes with high curvature.

Note: This product is for in vitro research use only