

CLCN5 Antibody

Catalog No: #32987

Package Size: #32987-1 50ul #32987-2 100ul

Orders: order@signalwayantibody.com

Support: tech@signalwayantibody.com

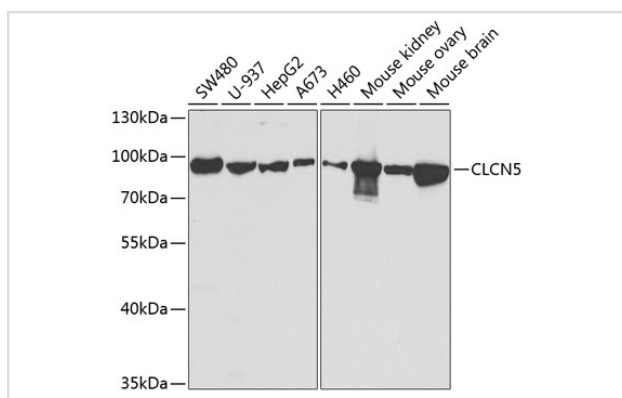
Description

Product Name	CLCN5 Antibody
Host Species	Rabbit
Clonality	Polyclonal
Isotype	IgG
Purification	Affinity purification
Applications	WB
Species Reactivity	Human,Mouse
Specificity	The antibody detects endogenous level of total CLCN5 protein.
Immunogen Type	Recombinant Protein
Immunogen Description	Recombinant fusion protein of human CLCN5 (NP_001121370.1).
Target Name	CLCN5
Other Names	CLCN5;CLC5;CLCK2;CIC-5;DENTS;NPHL1;NPHL2;XLRH;XRN;hCIC-K2
Accession No.	Uniprot:P51795GenelD:1184
Uniprot	P51795
GenelD	1184
SDS-PAGE MW	100kDa
Concentration	1.0mg/ml
Formulation	PBS with 0.02% sodium azide,50% glycerol,pH7.3.
Storage	Store at -20°C. Avoid freeze / thaw cycles.

Application Details

WB 1:500 - 1:2000

Images



Western blot analysis of extracts of various cell lines, using CLCN5 antibody.

Background

This gene encodes a member of the ClC family of chloride ion channels and ion transporters. The encoded protein is primarily localized to endosomal membranes and may function to facilitate albumin uptake by the renal proximal tubule. Mutations in this gene have been found in Dent disease and renal tubular disorders complicated by nephrolithiasis. Alternatively spliced transcript variants have been found for this gene.

Note: This product is for in vitro research use only