

GPD1 Antibody

Catalog No: #32990

Package Size: #32990-1 50ul #32990-2 100ul

Orders: order@signalwayantibody.comSupport: tech@signalwayantibody.com

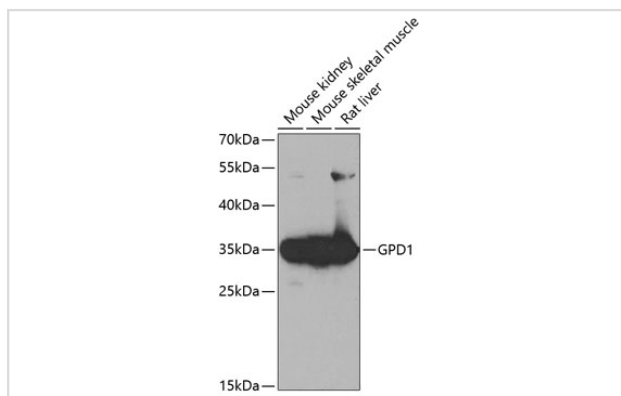
Description

Product Name	GPD1 Antibody
Host Species	Rabbit
Clonality	Polyclonal
Isotype	IgG
Purification	Affinity purification
Applications	WB
Species Reactivity	Human,Mouse,Rat
Specificity	The antibody detects endogenous level of total GPD1 protein.
Immunogen Type	Recombinant Protein
Immunogen Description	Recombinant fusion protein of human GPD1 (NP_005267.2).
Target Name	GPD1
Other Names	GPD1;GPD-C;GPDH-C;HTGTI
Accession No.	Uniprot:P21695GeneID:2819
Uniprot	P21695
GeneID	2819
SDS-PAGE MW	38kDa
Concentration	1.0mg/ml
Formulation	PBS with 0.02% sodium azide,50% glycerol,pH7.3.
Storage	Store at -20°C. Avoid freeze / thaw cycles.

Application Details

WB □ 1:500 - 1:2000

Images



Western blot analysis of extracts of various cell lines, using GPD1 antibody.

Background

This gene encodes a member of the NAD-dependent glycerol-3-phosphate dehydrogenase family. The encoded protein plays a critical role in carbohydrate and lipid metabolism by catalyzing the reversible conversion of dihydroxyacetone phosphate (DHAP) and reduced nicotinic adenine dinucleotide (NADH) to glycerol-3-phosphate (G3P) and NAD⁺. The encoded cytosolic protein and mitochondrial glycerol-3-phosphate dehydrogenase also form a glycerol phosphate shuttle that facilitates the transfer of reducing equivalents from the cytosol to mitochondria. Mutations in this gene are a cause of transient infantile hypertriglyceridemia. Alternatively spliced transcript variants encoding multiple isoforms have been observed for this gene.

Note: This product is for in vitro research use only