

HPSE Antibody

Catalog No: #32996

Package Size: #32996-1 50ul #32996-2 100ul

Orders: order@signalwayantibody.com

Support: tech@signalwayantibody.com

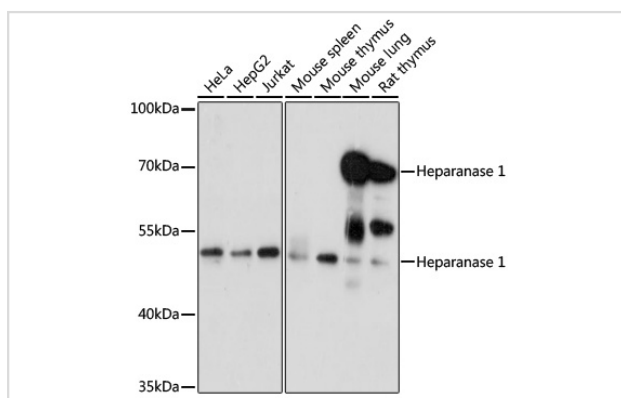
Description

Product Name	HPSE Antibody
Host Species	Rabbit
Clonality	Polyclonal
Purification	Antibodies were purified by affinity purification using immunogen.
Applications	WB,IF
Species Reactivity	Human,Mouse,Rat
Specificity	The antibody detects endogenous level of total HPSE protein.
Immunogen Type	Recombinant Protein
Immunogen Description	Recombinant protein of human HPSE.
Target Name	HPSE
Other Names	HPA; HPA1; HPR1; HSE1; HPSE1
Accession No.	Swiss-Prot:Q9Y251NCBI Gene ID:10855
Uniprot	Q9Y251
GeneID	10855;
SDS-PAGE MW	61KD
Concentration	1.0mg/ml
Formulation	Supplied at 1.0mg/mL in phosphate buffered saline (without Mg ²⁺ and Ca ²⁺), pH 7.4, 150mM NaCl, 0.02% sodium azide and 50% glycerol.
Storage	Store at -20°C

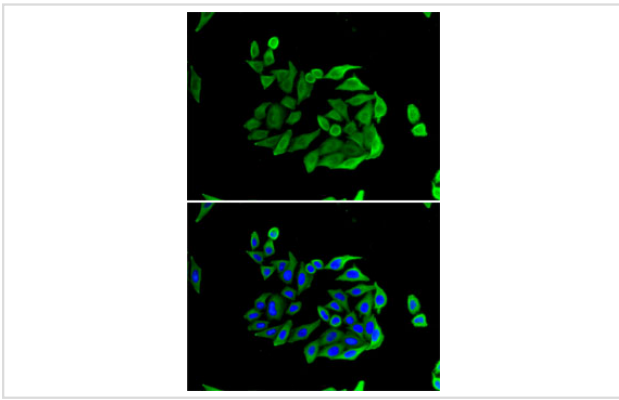
Application Details

WB □ 1:500 - 1:2000 IF □ 1:10 - 1:100

Images



Western blot analysis of extracts of various cell lines, using Heparanase 1 at 1:1000 dilution.



Immunofluorescence analysis of U2OS cells using Heparanase 1 . Blue: DAPI for nuclear staining.

Background

Heparan sulfate proteoglycans are major components of the basement membrane and extracellular matrix. The protein encoded by this gene is an enzyme that cleaves heparan sulfate proteoglycans to permit cell movement through remodeling of the extracellular matrix. In addition, this cleavage can release bioactive molecules from the extracellular matrix. Several transcript variants encoding different isoforms have been found for this gene.

Note: This product is for in vitro research use only