

## PRPF31 Antibody

Catalog No: #32999

Package Size: #32999-1 50ul #32999-2 100ul

Orders: [order@signalwayantibody.com](mailto:order@signalwayantibody.com)Support: [tech@signalwayantibody.com](mailto:tech@signalwayantibody.com)

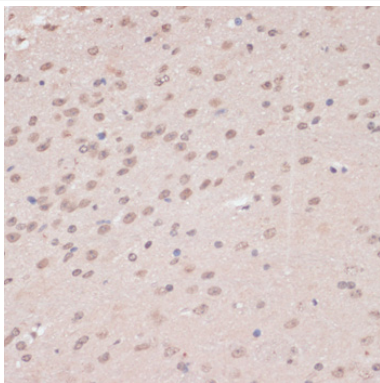
## Description

Product Name	PRPF31 Antibody
Host Species	Rabbit
Clonality	Polyclonal
Purification	Antibodies were purified by affinity purification using immunogen.
Applications	WB,IHC
Species Reactivity	Human,Mouse,Rat
Specificity	The antibody detects endogenous level of total PRPF31 protein.
Immunogen Type	Recombinant Protein
Immunogen Description	Recombinant protein of human PRPF31.
Target Name	PRPF31
Other Names	RP11; PRP31; SNRNP61; NY-BR-99;
Accession No.	Swiss-Prot:Q8WWY3NCBI Gene ID:26121
Uniprot	Q8WWY3
GeneID	26121;
SDS-PAGE MW	55KD
Concentration	1.0mg/ml
Formulation	Supplied at 1.0mg/mL in phosphate buffered saline (without Mg <sup>2+</sup> and Ca <sup>2+</sup> ), pH 7.4, 150mM NaCl, 0.02% sodium azide and 50% glycerol.
Storage	Store at -20°C

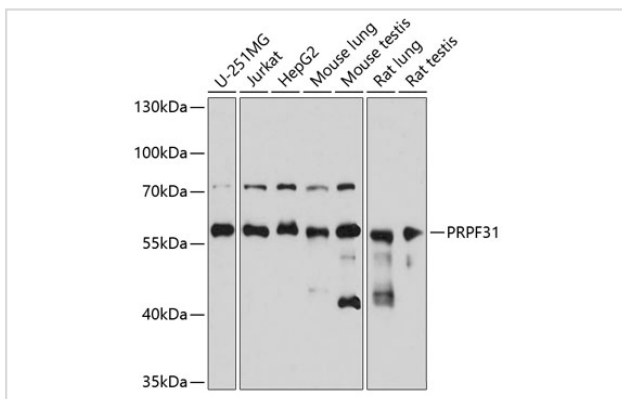
## Application Details

WB □ 1:500 - 1:2000 IHC □ 1:50 - 1:100

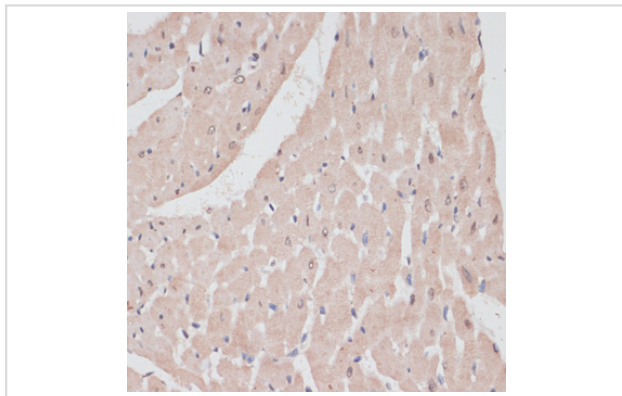
## Images



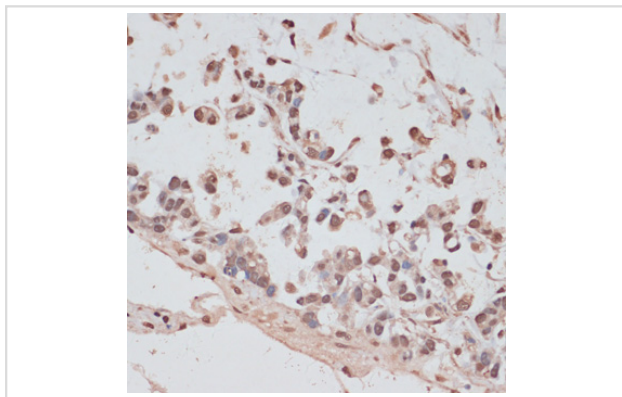
Immunohistochemistry of paraffin-embedded mouse brain using PRPF31 at dilution of 1:100 (40x lens).



Western blot analysis of extracts of various cell lines, using PRPF31 at 1:3000 dilution.



Immunohistochemistry of paraffin-embedded rat heart using PRPF31 at dilution of 1:100 (40x lens).



Immunohistochemistry of paraffin-embedded human gastric cancer using PRPF31 at dilution of 1:100 (40x lens).

## Background

This gene encodes a component of the spliceosome complex and is one of several retinitis pigmentosa-causing genes. When the gene product is added to the spliceosome complex, activation occurs.

Note: This product is for in vitro research use only