

## Prospero homeobox protein 1 Antibody

Catalog No: #21409

Package Size: #21409-1 50ul #21409-2 100ul

Orders: order@signalwayantibody.com

Support: tech@signalwayantibody.com

## Description

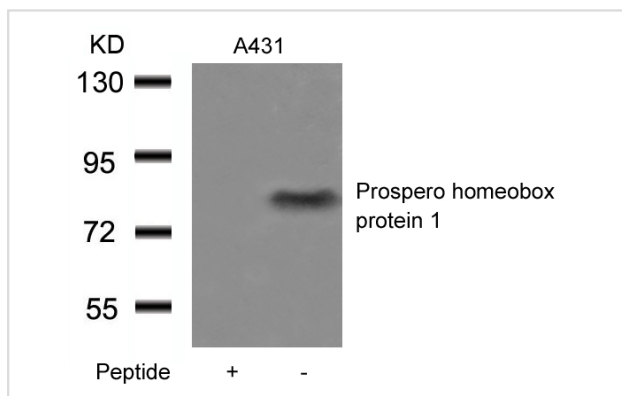
Product Name	Prospero homeobox protein 1 Antibody
Host Species	Rabbit
Clonality	Polyclonal
Purification	Antibodies were produced by immunizing rabbits with synthetic peptide and KLH conjugates. Antibodies were purified by affinity-chromatography using epitope-specific peptide.
Applications	WB
Species Reactivity	Hu Ms
Specificity	The antibody detects endogenous level of total Prospero homeobox protein. 1 protein.
Immunogen Type	Peptide-KLH
Immunogen Description	Peptide sequence around aa.723~727 (E-I-F-K-S) derived from Human Prospero homeobox protein 1.
Target Name	Prospero homeobox protein 1
Other Names	PROX1
Accession No.	Swiss-Prot: Q92786 NCBI Protein: NP_002754.2
Uniprot	Q92786
GeneID	5629;
Concentration	1.0mg/ml
Formulation	Supplied at 1.0mg/mL in phosphate buffered saline (without Mg <sup>2+</sup> and Ca <sup>2+</sup> ), pH 7.4, 150mM NaCl, 0.02% sodium azide and 50% glycerol.
Storage	Store at -20°C for long term preservation (recommended). Store at 4°C for short term use.

## Application Details

Predicted MW: 83kd

Western blotting: 1:500~1:1000

## Images



Western blot analysis of extracts from A431 cells using Prospero homeobox protein 1 Antibody #21409 and the same antibody preincubated with blocking peptide.

## Background

---

May play a fundamental role in early development of CNS. May regulate gene expression and development of postmitotic undifferentiated young neurons

Charest-Marcotte A, et al. (2010) *Genes Dev.* 24(6):537-42.

Huang Y, et al. (2010) *Mol Vis.* 16:341-52.

Hanai S, et al. (2010) *Seizure.* 19(5):274-9.

---

Note: This product is for in vitro research use only