

Coiled-coil domain-containing protein 106 Antibody

Catalog No: #21412

Package Size: #21412-1 50ul #21412-2 100ul

Orders: order@signalwayantibody.com

Support: tech@signalwayantibody.com

Description

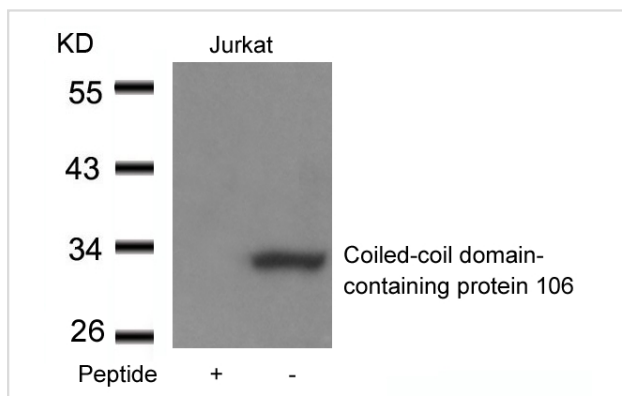
Product Name	Coiled-coil domain-containing protein 106 Antibody
Host Species	Rabbit
Clonality	Polyclonal
Purification	Antibodies were produced by immunizing rabbits with synthetic peptide and KLH conjugates. Antibodies were purified by affinity-chromatography using epitope-specific peptide.
Applications	WB
Species Reactivity	Hu
Specificity	The antibody detects endogenous level of total Coiled-coil domain-containing protein. 106.
Immunogen Type	Peptide-KLH
Immunogen Description	Peptide sequence around aa.2~6 (N-D-R-S-S) derived from Human Coiled-coil domain-containing protein 106.
Target Name	Coiled-coil domain-containing protein 106
Other Names	CCDC106; ZNF581; HSU79303
Accession No.	Swiss-Prot: Q9BWC9NCBI Protein: NP_037433.2
Uniprot	Q9BWC9
GeneID	29903;
Concentration	1.0mg/ml
Formulation	Supplied at 1.0mg/mL in phosphate buffered saline (without Mg ²⁺ and Ca ²⁺), pH 7.4, 150mM NaCl, 0.02% sodium azide and 50% glycerol.
Storage	Store at -20°C for long term preservation (recommended). Store at 4°C for short term use.

Application Details

Predicted MW: 32kd

Western blotting: 1:500~1:1000

Images



Western blot analysis of extracts from Jurkat cells using Coiled-coil domain-containing protein 106 antibody #21412 and the same antibody preincubated with blocking peptide.

Background

CCDC106 promotes the degradation of p53 protein and inhibits its transactivity.

Note: This product is for in vitro research use only