

CRY1 Antibody

Catalog No: #21414

Orders: order@signalwayantibody.comSupport: tech@signalwayantibody.com

Description

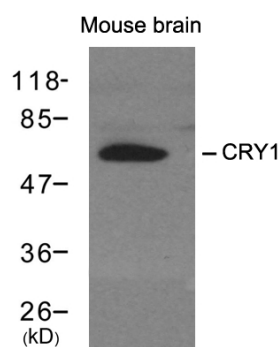
Product Name	CRY1 Antibody
Host Species	Rabbit
Clonality	Polyclonal
Purification	Affinity purification
Applications	WB,IHC,ELISA
Species Reactivity	Human, Mouse, Rat
Specificity	The antibody detects endogenous level of total CRY1 protein.
Immunogen Type	Recombinant Protein
Immunogen Description	Recombinant fusion protein containing a sequence corresponding to amino acids 1-255 of human CRY1 (NP_004066.1).
Target Name	CRY1
Other Names	PHLL1
Accession No.	Swiss-Prot: Q16526NCBI Protein: NP_031797.1
Uniprot	Q16526
GeneID	1407;
Calculated MW	66kd
Concentration	1.0mg/ml
Formulation	PBS with 0.02% sodium azide,50% glycerol,pH7.3.
Storage	Store at -20°C for long term preservation (recommended). Store at 4°C for short term use.

Application Details

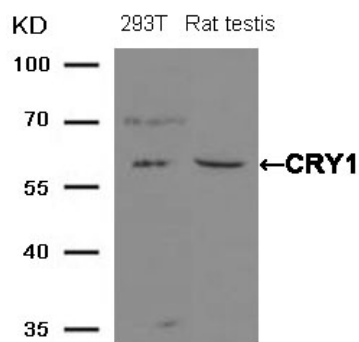
Predicted MW: 66kd

Western blotting: 1:500~1:2000

Images



Western blot analysis of extracts from mouse brain tissue using CRY1 antibody #21414.



Western blot analysis of extracts from 293T cells and Rat testis tissue using CRY1 Antibody #21414.

Background

Blue light-dependent regulator of the circadian feedback loop. Inhibits CLOCK|NPAS2-ARNTL E box-mediated transcription. Acts, in conjunction with CRY2, in maintaining period length and circadian rhythmicity. Has no photolyase activity. Capable of translocating circadian clock core proteins such as PER proteins to the nucleus. May inhibit CLOCK|NPAS2-ARNTL transcriptional activity through stabilizing the unphosphorylated form of ARNTL

Morioka N, et al. (2010) J Pharmacol Sci.113(3):234-45.

Fonseca F, et al. (2010) Mol Diagn Ther.14(3):171-8.

Stratmann M, et al.(2010) Genes Dev.24(12):1317-28.

Note: This product is for in vitro research use only