

BMAL1 Antibody

Catalog No: #21415

Package Size: #21415-1 50ul #21415-2 100ul

Orders: order@signalwayantibody.com

Support: tech@signalwayantibody.com

Description

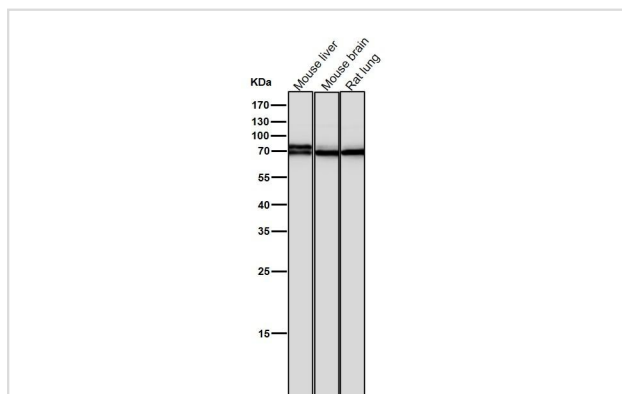
| | |
|-----------------------|-------------------------------------------------------------------------------------------------------------------------------|
| Product Name | BMAL1 Antibody |
| Host Species | Rabbit |
| Clonality | Monoclonal |
| Purification | Affinity-chromatography |
| Applications | WB |
| Species Reactivity | Hu Ms Rt |
| Specificity | The antibody detects endogenous level of total BMAL1 protein. |
| Immunogen Type | Peptide-KLH |
| Immunogen Description | A synthesized peptide derived from human BMAL1 |
| Target Name | BMAL1 |
| Other Names | MOP3; BMAL1c; ARNTL; TIC; |
| Accession No. | Swiss-Prot: O00327 NCBI Protein: NP_001025443.1 |
| Uniprot | O00327 |
| GeneID | 406; |
| Formulation | Rabbit IgG in 10mM phosphate buffered saline , pH 7.4, 150mM sodium chloride, 0.05% BSA, 0.02% sodium azide and 50% glycerol. |
| Storage | Store at +4°C for short term. Store at -20°C for long term. Avoid freeze/thaw cycle. |

Application Details

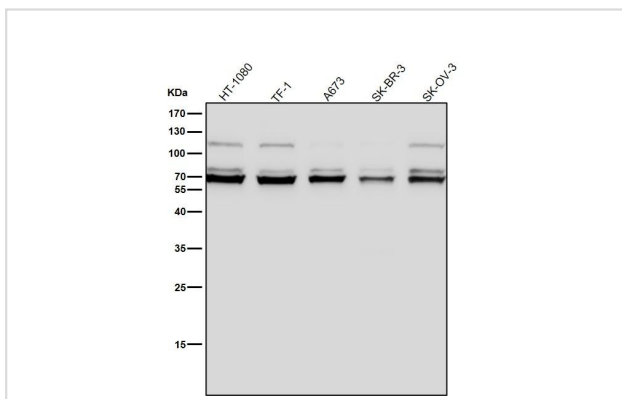
Predicted MW: 69kd

WB 1:1000-1:2000

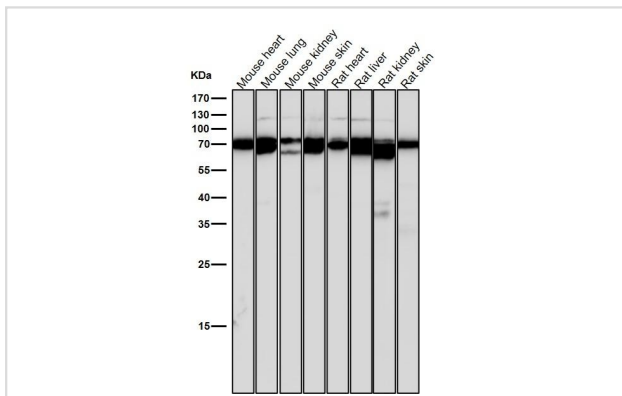
Images



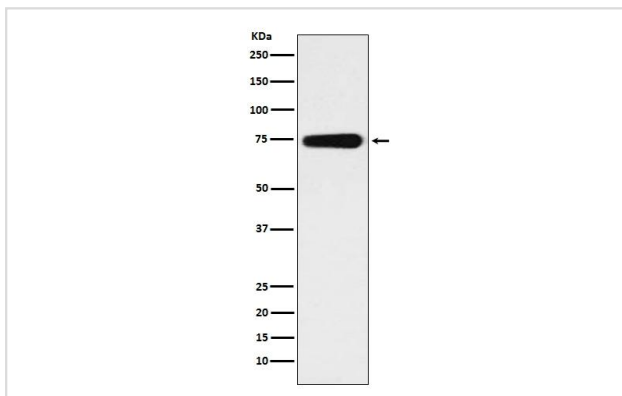
All lanes use the Antibody at 1:2K dilution for 1 hour at room temperature.



All lanes use the Antibody at 1:2K dilution for 1 hour at room temperature.



All lanes use the Antibody at 1:2K dilution for 1 hour at room temperature.



Western blot analysis of BMAL1 expression in human fetal heart lysate.

Background

The protein encoded by this gene is a basic helix-loop-helix protein that forms a heterodimer with CLOCK. This heterodimer binds E-box enhancer elements upstream of Period (PER1, PER2, PER3) and Cryptochrome (CRY1, CRY2) genes and activates transcription of these genes. PER and CRY proteins heterodimerize and repress their own transcription by interacting in a feedback loop with CLOCK/ARNTL complexes.

Note: This product is for in vitro research use only