

## Her3/ErbB3(Ab-1289) Antibody

Catalog No: #21509

Package Size: #21509-1 50ul #21509-2 100ul

Orders: order@signalwayantibody.com

Support: tech@signalwayantibody.com

## Description

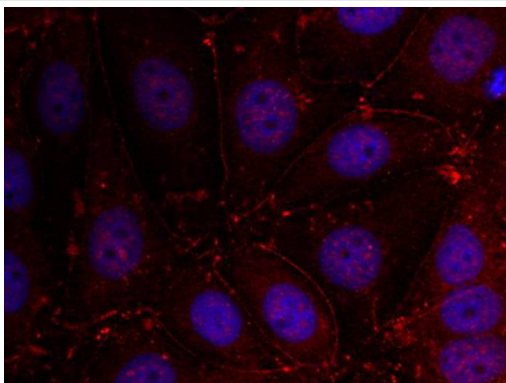
Product Name	Her3/ErbB3(Ab-1289) Antibody
Host Species	Rabbit
Clonality	Polyclonal
Purification	Antibodies were produced by immunizing rabbits with synthetic peptide and KLH conjugates. Antibodies were purified by affinity-chromatography using epitope-specific peptide.
Applications	IF
Species Reactivity	Hu
Specificity	The antibody detects endogenous level of total Her3/ErbB3 protein.
Immunogen Type	Peptide-KLH
Immunogen Description	Peptide sequence around aa.1287~1291 (Q-G-Y-E-E) derived from Human Her3/ErbB3.
Target Name	Her3/ErbB3
Other Names	Tyrosine kinase-type cell surface receptor HER3
Accession No.	Swiss-Prot: P21860NCBI Protein: NP_001005915.1
Uniprot	P21860
GeneID	2065;
Concentration	1.0mg/ml
Formulation	Supplied at 1.0mg/mL in phosphate buffered saline (without Mg <sup>2+</sup> and Ca <sup>2+</sup> ), pH 7.4, 150mM NaCl, 0.02% sodium azide and 50% glycerol.
Storage	Store at -20°C for long term preservation (recommended). Store at 4°C for short term use.

## Application Details

Predicted MW: 185kd

Immunofluorescence: 1:100~1:200

## Images



Immunofluorescence staining of methanol-fixed MCF cells using Her3/ErbB3(Ab-1289) Antibody #21509.

## Background

---

Binds and is activated by neuregulins and NTAK.

---

Note: This product is for in vitro research use only