

b-Catenin(Ab-654) Antibody

Catalog No: #21520

Package Size: #21520-1 50ul #21520-2 100ul

Orders: order@signalwayantibody.com

Support: tech@signalwayantibody.com

Description

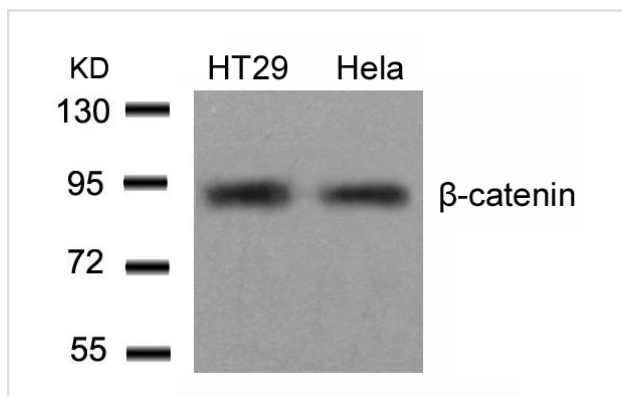
| | |
|-----------------------|---|
| Product Name | b-Catenin(Ab-654) Antibody |
| Host Species | Rabbit |
| Clonality | Polyclonal |
| Purification | Antibodies were produced by immunizing rabbits with synthetic peptide and KLH conjugates. Antibodies were purified by affinity-chromatography using epitope-specific peptide. |
| Applications | WB |
| Species Reactivity | Hu Ms Rt |
| Specificity | The antibody detects endogenous level of total b-Catenin protein. |
| Immunogen Type | Peptide-KLH |
| Immunogen Description | Peptide sequence around aa.652~656 (A-T-Y-A-A) derived from Human b-Catenin. |
| Target Name | b-Catenin |
| Other Names | CTNNB1; CATNB; CTNB1; CTNNB; |
| Accession No. | Swiss-Prot: P35222NCBI Protein: NP_001091679.1 |
| Uniprot | P35222 |
| GeneID | 1499; |
| Concentration | 1.0mg/ml |
| Formulation | Supplied at 1.0mg/mL in phosphate buffered saline (without Mg ²⁺ and Ca ²⁺), pH 7.4, 150mM NaCl, 0.02% sodium azide and 50% glycerol. |
| Storage | Store at -20°C for long term preservation (recommended). Store at 4°C for short term use. |

Application Details

Predicted MW: 92kd

Western blotting: 1:500~1:1000

Images



Western blot analysis of extracts from HT29 and HeLa cells using b-Catenin(Ab-654) Antibody #21520.

Background

Involved in the regulation of cell adhesion and in signal transduction through the Wnt pathway.

Note: This product is for in vitro research use only