

## PLCg1(Ab-771) Antibody

Catalog No: #21523

Package Size: #21523-1 50ul #21523-2 100ul

Orders: order@signalwayantibody.com

Support: tech@signalwayantibody.com

## Description

Product Name	PLCg1(Ab-771) Antibody
Host Species	Rabbit
Clonality	Polyclonal
Purification	Antibodies were produced by immunizing rabbits with synthetic peptide and KLH conjugates. Antibodies were purified by affinity-chromatography using epitope-specific peptide.
Applications	WB IHC
Species Reactivity	Hu Ms Rt
Specificity	The antibody detects endogenous level of total PLC-g1 protein.
Immunogen Type	Peptide-KLH
Immunogen Description	Peptide sequence around aa. 769~773 (P-D-Y-G-A) derived from Human PLC-g1.
Target Name	PLCg1
Other Names	Phosphoinositide phospholipase C; Phospholipase C-gamma-1;
Accession No.	Swiss-Prot: P19174NCBI Protein: NP_002651.2
Uniprot	P19174
GeneID	5335;
Concentration	1.0mg/ml
Formulation	Supplied at 1.0mg/mL in phosphate buffered saline (without Mg <sup>2+</sup> and Ca <sup>2+</sup> ), pH 7.4, 150mM NaCl, 0.02% sodium azide and 50% glycerol.
Storage	Store at -20°C for long term preservation (recommended). Store at 4°C for short term use.

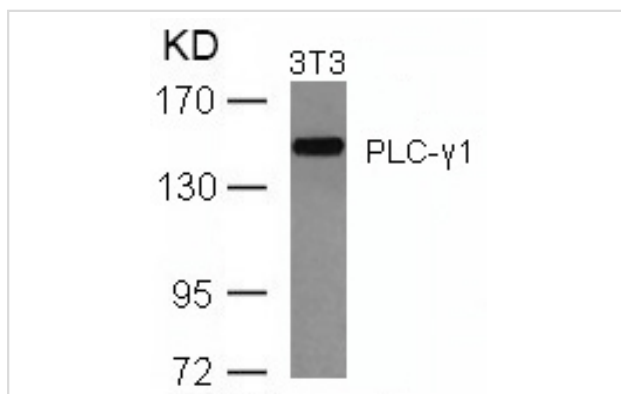
## Application Details

Predicted MW: 155kd

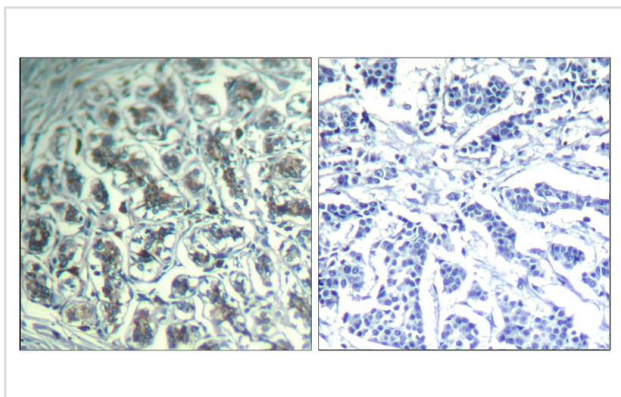
Western blotting: 1:500~1:1000

Immunohistochemistry: 1:50~1:100

## Images



Western blot analysis of extracts from 3T3 cells using PLC-g1(Ab-771) Antibody #21523.



Immunohistochemical analysis of paraffin-embedded human breast carcinoma tissue using PLC-g1 (Ab-771) Antibody #21523(left) or the same antibody preincubated with blocking peptide(right).

## Background

PLC-gamma is a major substrate for heparin-binding growth factor 1 (acidic fibroblast growth factor)-activated tyrosine kinase.

Note: This product is for in vitro research use only