

## c-kit(Ab-936) Antibody

Catalog No: #21539

Package Size: #21539-1 50ul #21539-2 100ul

Orders: order@signalwayantibody.com

Support: tech@signalwayantibody.com

## Description

Product Name	c-kit(Ab-936) Antibody
Host Species	Rabbit
Clonality	Polyclonal
Purification	Antibodies were produced by immunizing rabbits with synthetic peptide and KLH conjugates. Antibodies were purified by affinity-chromatography using epitope-specific peptide.
Applications	WB IHC
Species Reactivity	Hu
Specificity	The antibody detects endogenous level of total c-Kit protein.
Immunogen Type	Peptide-KLH
Immunogen Description	Peptide sequence around aa.934~938 (H-I-Y-S-N) derived from Human c-Kit.
Target Name	c-kit
Other Names	KIT; CD117; SCFR; PBT;
Accession No.	Swiss-Prot: P10721NCBI Protein: NP_000213.1
Uniprot	P10721
GeneID	3815;
Concentration	1.0mg/ml
Formulation	Supplied at 1.0mg/mL in phosphate buffered saline (without Mg <sup>2+</sup> and Ca <sup>2+</sup> ), pH 7.4, 150mM NaCl, 0.02% sodium azide and 50% glycerol.
Storage	Store at -20°C for long term preservation (recommended). Store at 4°C for short term use.

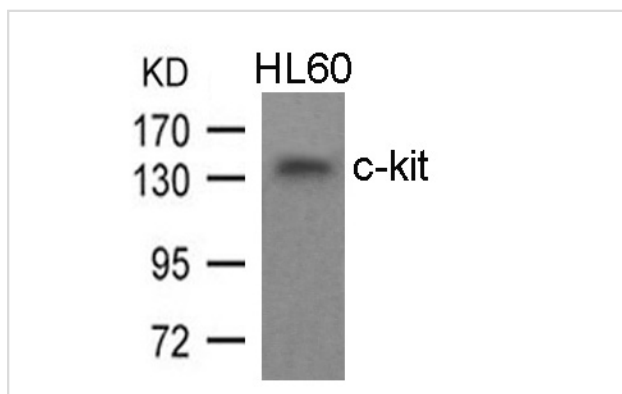
## Application Details

Predicted MW: 145kd

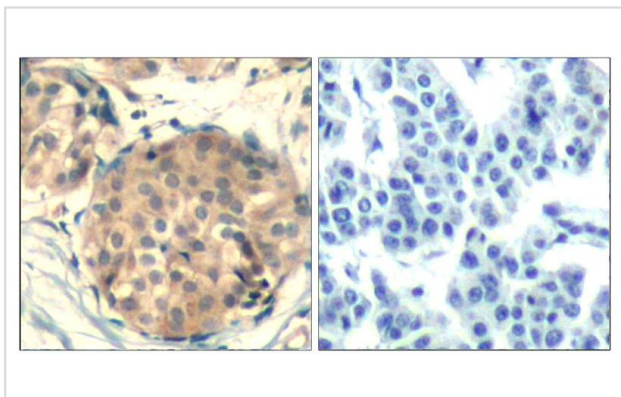
Western blotting: 1:500~1:1000

Immunohistochemistry: 1:50~1:100

## Images



Western blot analysis of extracts from HL60 cells using c-kit(Ab-936) Antibody #21539.



Immunohistochemical analysis of paraffin-embedded human breast carcinoma tissue using c-kit(Ab-936) Antibody #21539(left) or the same antibody preincubated with blocking peptide(right).

## Background

This is the receptor for stem cell factor (mast cell growth factor). It has a tyrosine-protein kinase activity. Binding of the ligands leads to the autophosphorylation of KIT and its association with substrates such as phosphatidylinositol 3-kinase (PI3K)

Martin, F.H. et al. (1990) *Cell* 63, 203-11.

Blume-Jensen, P. et al. (2000) *Nat Genet* 24, 157-62.

Gommerman, J.L. et al. (1997) *J Biol Chem* 272, 30519-25.

Nocka, K. et al. (1990) *EMBO J* 9, 1805-13.

Note: This product is for in vitro research use only