

Fra-2 Antibody

Catalog No: #33377

Package Size: #33377-1 50ul #33377-2 100ul

Orders: order@signalwayantibody.comSupport: tech@signalwayantibody.com

Description

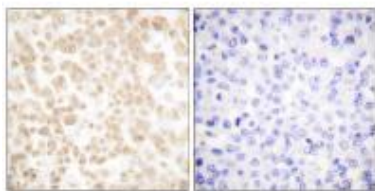
Product Name	Fra-2 Antibody
Host Species	Rabbit
Clonality	Polyclonal
Purification	The antibody was affinity-purified from rabbit antiserum by affinity-chromatography using epitope-specific immunogen.
Applications	WB IHC
Species Reactivity	Hu Ms Rt
Specificity	The antibody detects endogenous levels of total Fra-2 protein.
Immunogen Type	Peptide
Immunogen Description	Synthesized peptide derived from human Fra-2.
Target Name	Fra-2
Other Names	FLJ23306; FOS-RELATED ANTIGEN 2;
Accession No.	Swiss-Prot: P15408NCBI Gene ID: 2355
Uniprot	P15408
GeneID	2355;
SDS-PAGE MW	43kd
Concentration	1.0mg/ml
Formulation	Rabbit IgG in phosphate buffered saline (without Mg ²⁺ and Ca ²⁺), pH 7.4, 150mM NaCl, 0.02% sodium azide and 50% glycerol.
Storage	Store at -20°C

Application Details

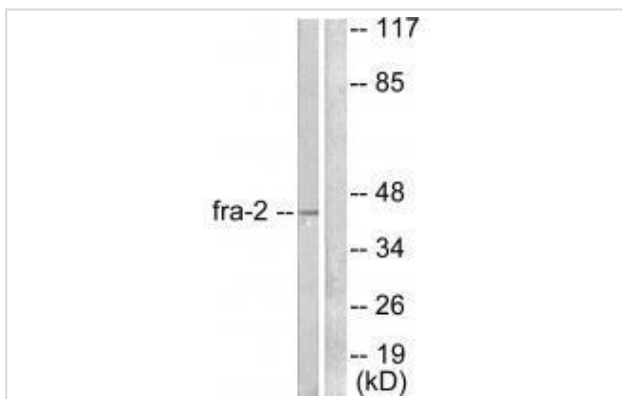
Western blotting: 1:500~1:3000

Immunohistochemistry: 1:50~1:100

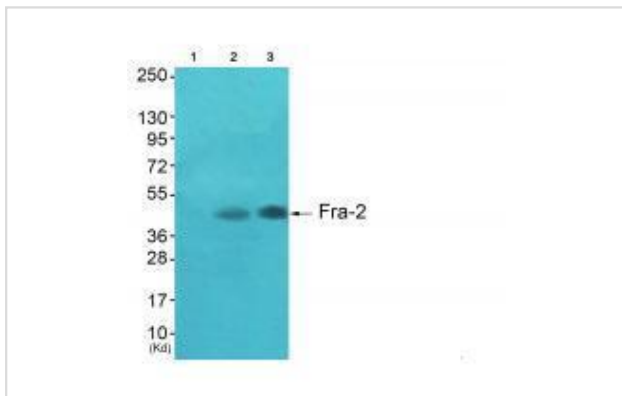
Images



Immunohistochemical analysis of paraffin-embedded human breast carcinoma tissue using Fra-2 antibody #33377.



Western blot analysis of extracts from LOVO cells, using Fra-2 antibody #33377.



Western blot analysis of extracts from A549 cells (Lane 2) and HepG2 cells (Lane 3), using Fra-2 antibody #33377. The lane on the left is treated with synthesized peptide.

Background

Controls osteoclast survival and size By similarity. As a dimer with JUN, activates LIF transcription By similarity. Activates CEBPB transcription in PGE2-activated osteoblasts By similarity.

Masao Murakami, *Cell Growth Differ.*, May 1999; 10: 333.

Martin Smith, *Mol. Cell. Biol.*, Jun 2001; 21: 3704 - 3713.

L. K. Mccauley, *Endocrinology*, May 2001; 142: 1975.

Tetsuo Yoshida, *Nucleic Acids Res.*, Jun 1993; 21: 2715 - 2721.

Note: This product is for in vitro research use only