

Glucagon Antibody

Catalog No: #33385

Package Size: #33385-1 50ul #33385-2 100ul

Orders: order@signalwayantibody.comSupport: tech@signalwayantibody.com

Description

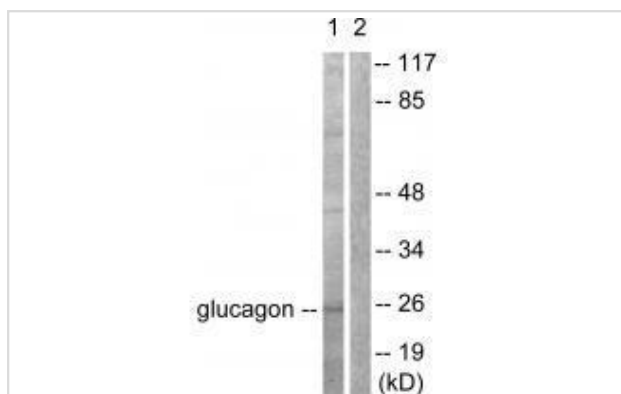
Product Name	Glucagon Antibody
Host Species	Rabbit
Clonality	Polyclonal
Purification	The antibody was affinity-purified from rabbit antiserum by affinity-chromatography using epitope-specific immunogen.
Applications	WB IF
Species Reactivity	Hu Ms Rt
Specificity	The antibody detects endogenous levels of total glucagon protein.
Immunogen Type	Peptide
Immunogen Description	Synthesized peptide derived from human glucagon.
Target Name	Glucagon
Other Names	Glicentin; Glicentin-related polypeptide; Oxyntomodulin; Glucagon-like peptide 1(GLP-1); Glucagon-like peptide 1(7-37)
Accession No.	Swiss-Prot: P01275 NCBI Gene ID: 2641
Uniprot	P01275
GeneID	2641;
SDS-PAGE MW	25kd
Concentration	1.0mg/ml
Formulation	Rabbit IgG in phosphate buffered saline (without Mg ²⁺ and Ca ²⁺), pH 7.4, 150mM NaCl, 0.02% sodium azide and 50% glycerol.
Storage	Store at -20°C

Application Details

Western blotting: 1:500~1:3000

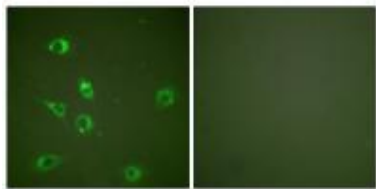
Immunofluorescence: 1:100~1:500

Images



Western blot analysis of extracts from COS7 cells, using Glucagon antibody #33385.

Immunofluorescence analysis of NIH/3T3 cells, using Glucagon antibody #33385.



Background

Glucagon plays a key role in glucose metabolism and homeostasis. Regulates blood glucose by increasing gluconeogenesis and decreasing glycolysis. A counterregulatory hormone of insulin, raises plasma glucose levels in response to insulin-induced hypoglycemia. Plays an important role in initiating and maintaining hyperglycemic conditions in diabetes. GLP-1 is a potent stimulator of glucose-dependent insulin release. Play important roles on gastric motility and the suppression of plasma glucagon levels. May be involved in the suppression of satiety and stimulation of glucose disposal in peripheral tissues, independent of the actions of insulin. Have growth-promoting activities on intestinal epithelium. May also regulate the hypothalamic pituitary axis (HPA) via effects on LH, TSH, CRH, oxytocin, and vasopressin secretion. Increases islet mass through stimulation of islet neogenesis and pancreatic beta cell proliferation. Inhibits beta cell apoptosis. GLP-2 stimulates intestinal growth and up-regulates villus height in the small intestine, concomitant with increased crypt cell proliferation and decreased enterocyte apoptosis. The gastrointestinal tract, from the stomach to the colon is the principal target for GLP-2 action. Plays a key role in nutrient homeostasis, enhancing nutrient assimilation through enhanced gastrointestinal function, as well as increasing nutrient disposal. Stimulates intestinal glucose transport and decreases mucosal permeability. Oxyntomodulin significantly reduces food intake. Inhibits gastric emptying in humans. Suppression of gastric emptying may lead to increased gastric distension, which may contribute to satiety by causing a sensation of fullness. Glicentin may modulate gastric acid secretion and the gastro-pyloro-duodenal activity. May play an important role in intestinal mucosal growth in the early period of life.

Edoardo C. Aromataris, *J. Physiol.*, Jun 2006; 573: 611 - 625.

Xiao C. Li, *Hypertension*, Mar 2006; 47: 580 - 585.

Kirstan A. Vessey, *Invest. Ophthalmol. Vis. Sci.*, Nov 2005; 46: 3922 - 3931.

Xiaosong Ma, *Mol. Endocrinol.*, Jan 2005; 19: 198 - 212.

Note: This product is for in vitro research use only