

Met(Ab-1003) Antibody

Catalog No: #21548

Package Size: #21548-1 50ul #21548-2 100ul

Orders: order@signalwayantibody.com

Support: tech@signalwayantibody.com

Description

Product Name	Met(Ab-1003) Antibody
Host Species	Rabbit
Clonality	Polyclonal
Purification	Antibodies were produced by immunizing rabbits with synthetic peptide and KLH conjugates. Antibodies were purified by affinity-chromatography using epitope-specific peptide.
Applications	WB IHC
Species Reactivity	Hu Ms Rt
Specificity	The antibody detects endogenous level of total Met protein.
Immunogen Type	Peptide-KLH
Immunogen Description	Peptide sequence around aa. 1001~1005 (V-D-Y-R-A) derived from Human Met.
Target Name	Met
Other Names	Scatter factor receptor
Accession No.	Swiss-Prot: P08581NCBI Protein: NP_000236.2
Uniprot	P08581
GeneID	4233;
Concentration	1.0mg/ml
Formulation	Supplied at 1.0mg/mL in phosphate buffered saline (without Mg ²⁺ and Ca ²⁺), pH 7.4, 150mM NaCl, 0.02% sodium azide and 50% glycerol.
Storage	Store at -20°C for long term preservation (recommended). Store at 4°C for short term use.

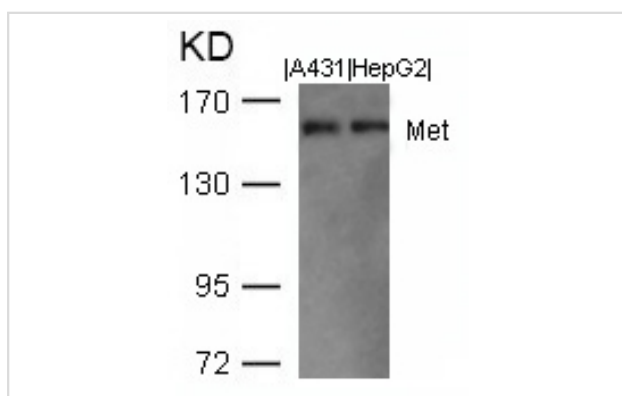
Application Details

Predicted MW: 156kd

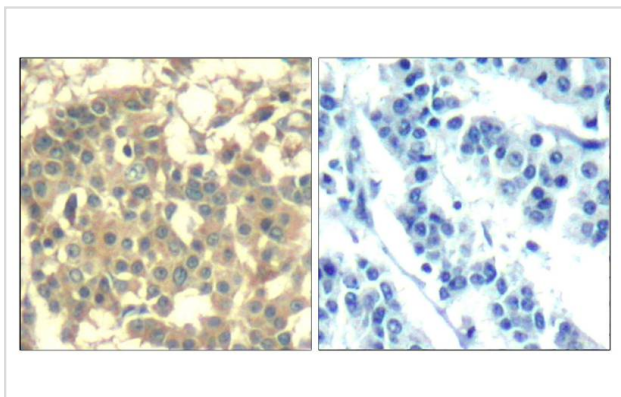
Western blotting: 1:500~1:1000

Immunohistochemistry: 1:50~1:100

Images



Western blot analysis of extracts from A431 and HepG2 cells using Met(Ab-1003) Antibody #21548.



Immunohistochemical analysis of paraffin-embedded human breast carcinoma tissue using Met(Ab-1003) Antibody #21548(left) or the same antibody preincubated with blocking peptide(right).

Background

Receptor for hepatocyte growth factor and scatter factor. Has a tyrosine-protein kinase activity. Functions in cell proliferation, scattering, morphogenesis and survival.

Weidner, K.M. et al. (1993) *J. Cell Biol.* 121, 145-154.

Traxler, P. et al. (2001) *Med. Res. Rev.* 21, 499-512.

Schaeper, U. et al. (2000) *J. Cell Biol.* 149, 1419-1432.

Park, M. et al. (1986) *Cell* 45, 895-904.

Note: This product is for in vitro research use only