

hCG β Antibody

Catalog No: #33397

Package Size: #33397-1 50ul #33397-2 100ul

Orders: order@signalwayantibody.comSupport: tech@signalwayantibody.com

Description

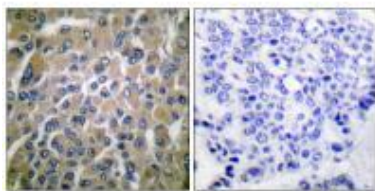
Product Name	hCG β Antibody
Host Species	Rabbit
Clonality	Polyclonal
Purification	The antibody was affinity-purified from rabbit antiserum by affinity-chromatography using epitope-specific immunogen.
Applications	WB IHC
Species Reactivity	Hu Ms
Specificity	The antibody detects endogenous levels of total hCG β protein.
Immunogen Type	Peptide
Immunogen Description	Synthesized peptide derived from human hCG β .
Target Name	hCG β
Other Names	Choriogonadotropin subunit beta [Precursor] ; CG-beta; Chorionic gonadotrophin chain beta;
Accession No.	Swiss-Prot: P01233NCBI Gene ID: 1082/93659/94027/94115
Uniprot	P01233
GeneID	1082;93659;94027;94115;
SDS-PAGE MW	20kd
Concentration	1.0mg/ml
Formulation	Rabbit IgG in phosphate buffered saline (without Mg ²⁺ and Ca ²⁺), pH 7.4, 150mM NaCl, 0.02% sodium azide and 50% glycerol.
Storage	Store at -20°C

Application Details

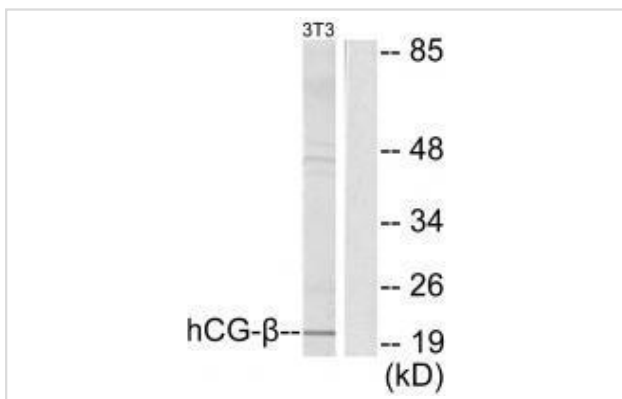
Western blotting: 1:500~1:3000

Immunohistochemistry: 1:50~1:100

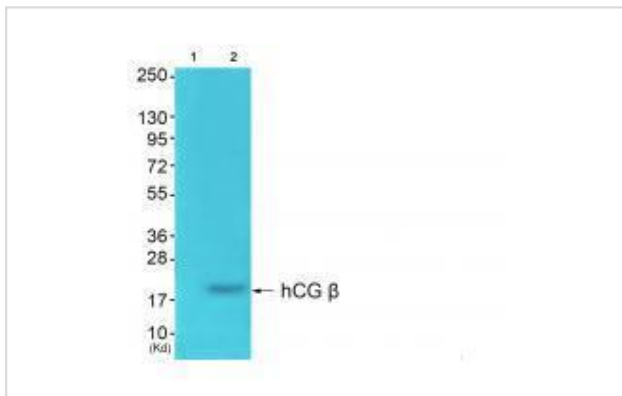
Images



Immunohistochemical analysis of paraffin-embedded human breast carcinoma tissue using hCG β antibody #33397.



Western blot analysis of extracts from NIH/3T3 cells, using hCG β antibody #33397.



Western blot analysis of extracts from K562 cells using hCG β antibody #33397. The lane on the left is treated with synthesized peptide.

Background

Stimulates the ovaries to synthesize the steroids that are essential for the maintenance of pregnancy.

Ruth McChesney, Hum. Reprod., Apr 2005; 20: 928 - 935.

G. Zimmermann, Mol. Hum. Reprod., Feb 2003; 9: 81 - 89

CM Thomas, Clin. Chem., Apr 1990; 36: 651 - 655.

B Saller, Clin. Chem., Feb 1990; 36: 234 - 239.

Note: This product is for in vitro research use only