

EGFR(Ab-1197) Goat Polyclonal Antibody

Catalog No: #21551

Package Size: #21551-1 50ul #21551-2 100ul

Orders: order@signalwayantibody.com

Support: tech@signalwayantibody.com

Description

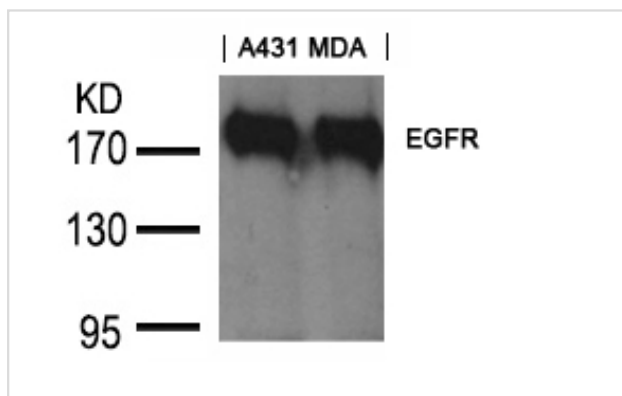
| | |
|-----------------------|--|
| Product Name | EGFR(Ab-1197) Goat Polyclonal Antibody |
| Host Species | Goat |
| Clonality | Polyclonal |
| Purification | Antibodies were produced by immunizing goat with synthetic peptide and KLH conjugates. Antibodies were purified by affinity-chromatography using epitope-specific peptide. |
| Applications | WB |
| Species Reactivity | Hu Ms Rt |
| Specificity | The antibody detects endogenous level of total EGFR protein. |
| Immunogen Type | Peptide-KLH |
| Immunogen Description | Peptide sequence around aa.1195~1199 (A-E-Y-L-R) derived from Human EGFR. |
| Target Name | EGFR |
| Other Names | Receptor tyrosine-protein kinase ErbB-1; ERBB1; kinase EGFR |
| Accession No. | Swiss-Prot: P00533NCBI Protein: NP_005219.2 |
| Uniprot | P00533 |
| GeneID | 1956; |
| Concentration | 1.0mg/ml |
| Formulation | Supplied at 1.0mg/mL in phosphate buffered saline (without Mg ²⁺ and Ca ²⁺), pH 7.4, 150mM NaCl, 0.02% sodium azide and 50% glycerol. |
| Storage | Store at -20°C for long term preservation (recommended). Store at 4°C for short term use. |

Application Details

Predicted MW: 175kd

Western blotting: 1:500~1:1000

Images



Western blot analysis of extracts from A431 and MDA cells using EGFR(Ab-1197) goat polyclonal antibody #21551.

Background

Receptor for EGF, but also for other members of the EGF family, as TGF- α , amphiregulin, betacellulin, heparin-binding EGF-like growth factor, GP30 and vaccinia virus growth factor. Is involved in the control of cell growth and differentia

Corbalan-Garcia S, et al. (1996) Mol Cell Biol; 16(10): 5674-5682

Kanner SB, et al. (1991) Mol Cell Biol; 11(2): 713-720

Wu TT, et al. (1998) Mol Biol Cell; 9(7): 1661-1674

O

Note: This product is for in vitro research use only