

## MMP-2 Antibody

Catalog No: #33441

Package Size: #33441-1 50ul #33441-2 100ul

Orders: order@signalwayantibody.com

Support: tech@signalwayantibody.com

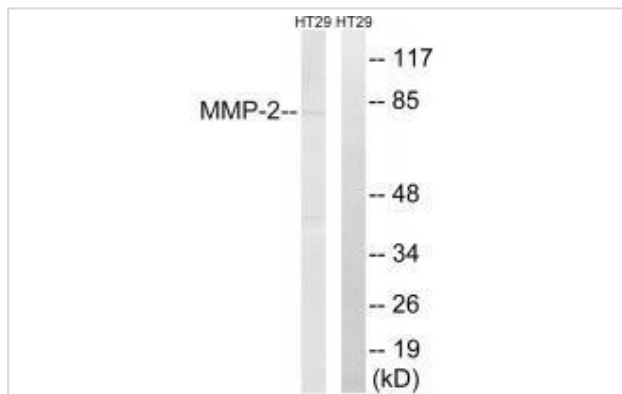
## Description

Product Name	MMP-2 Antibody
Host Species	Rabbit
Clonality	Polyclonal
Purification	The antibody was affinity-purified from rabbit antiserum by affinity-chromatography using epitope-specific immunogen.
Applications	WB
Species Reactivity	Hu Ms Rt
Specificity	The antibody detects endogenous levels of total MMP-2 protein.
Immunogen Type	Peptide
Immunogen Description	Synthesized peptide derived from human MMP-2.
Target Name	MMP-2
Other Names	CLG4A; COLLAGENASE TYPE IV; 72-KD; COLLAGENASE TYPE IV-A; GELATINASE
Accession No.	Swiss-Prot: P08253NCBI Gene ID: 4313
Uniprot	P08253
GeneID	4313;
SDS-PAGE MW	74kd
Concentration	1.0mg/ml
Formulation	Rabbit IgG in phosphate buffered saline (without Mg <sup>2+</sup> and Ca <sup>2+</sup> ), pH 7.4, 150mM NaCl, 0.02% sodium azide and 50% glycerol.
Storage	Store at -20°C

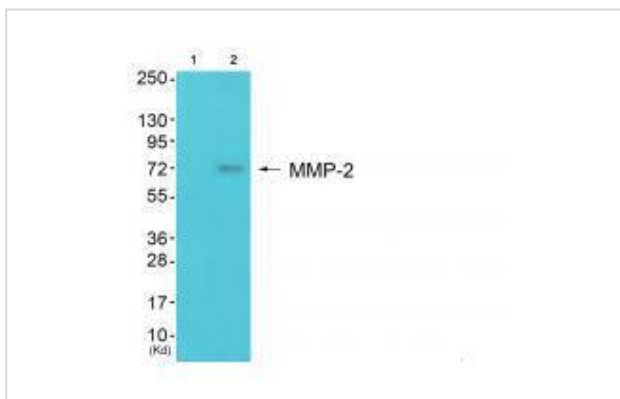
## Application Details

Western blotting: 1:500~1:3000

## Images



Western blot analysis of extracts from HT-29 cells, using MMP-2 antibody #33441.



Western blot analysis of extracts from 3T3 cells (Lane 2), using MMP-2 antibody #33441. The lane on the left is treated with synthesized peptide.

## Background

Ubiquitous metalloproteinase that is involved in diverse functions such as remodeling of the vasculature, angiogenesis, tissue repair, tumor invasion, inflammation, and atherosclerotic plaque rupture. As well as degrading extracellular matrix proteins, can also act on several nonmatrix proteins such as big endothelial 1 and beta-type CGRP promoting vasoconstriction. Also cleaves KISS at a Gly-I-Leu bond. Appears to have a role in myocardial cell death pathways. Contributes to myocardial oxidative stress by regulating the activity of GSK3beta. Cleaves GSK3beta in vitro. Involved in the formation of the fibrovascular tissues in association with MMP14. PEX, the C-terminal non-catalytic fragment of MMP2, possesses anti-angiogenic and anti-tumor properties and inhibits cell migration and cell adhesion to FGF2 and vitronectin. Ligand for integrin $\alpha$ 5 $\beta$ 3 on the surface of blood vessels. Isoform 2: Mediates the proteolysis of CHUK/IKKA and initiates a primary innate immune response by inducing mitochondrial-nuclear stress signaling with activation of the pro-inflammatory NF-kappaB, NFAT and IRF transcriptional pathways.

Charlotte J. Morrison, J. Biol. Chem., Dec 2001; 276: 47402 - 47410.

Hala S. Azzam, J Natl Cancer Inst, Nov 1993; 85: 1758 - 1764.

Jane L. English, J. Biol. Chem., Apr 2006; 281: 10337 - 10346.

JORDI ESPARZA, FASEB J, Nov 2004; 18: 1682 - 1691.

Note: This product is for in vitro research use only