

P300/CBP Antibody

Catalog No: #33460

Package Size: #33460-1 50ul #33460-2 100ul

Orders: order@signalwayantibody.comSupport: tech@signalwayantibody.com

Description

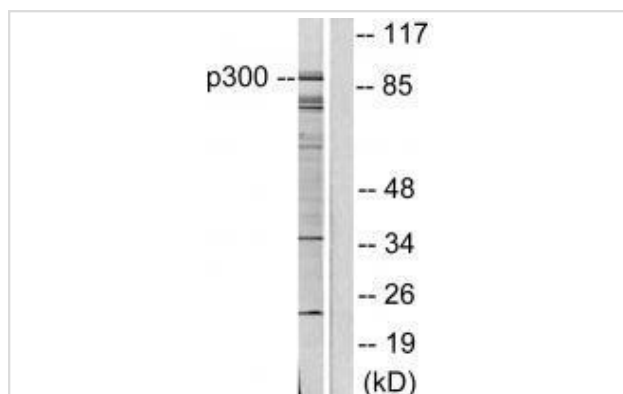
Product Name	P300/CBP Antibody
Host Species	Rabbit
Clonality	Polyclonal
Purification	The antibody was affinity-purified from rabbit antiserum by affinity-chromatography using epitope-specific immunogen.
Applications	WB IHC
Species Reactivity	Hu Ms Rt
Specificity	The antibody detects endogenous levels of total P300/CBP protein.
Immunogen Type	Peptide
Immunogen Description	Synthesized peptide derived from human P300/CBP.
Target Name	P300/CBP
Other Names	CREB-binding protein; CREBBP E1A-associated protein p300; EP300; P300 transcription coactivator homolog;
Accession No.	Swiss-Prot: Q92831NCBI Gene ID: 2033
Uniprot	Q92831
GeneID	2033;
SDS-PAGE MW	93kd
Concentration	1.0mg/ml
Formulation	Rabbit IgG in phosphate buffered saline (without Mg ²⁺ and Ca ²⁺), pH 7.4, 150mM NaCl, 0.02% sodium azide and 50% glycerol.
Storage	Store at -20°C

Application Details

Western blotting: 1:500~1:3000

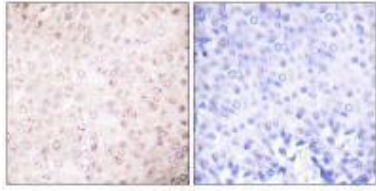
Immunohistochemistry: 1:50~1:100

Images



Western blot analysis of extracts from COLO205 cells, using P300/CBP antibody #33460.

Immunohistochemical analysis of paraffin-embedded human breast carcinoma tissue using P300/CBP antibody #33460.



Background

Acetylates histones, giving a specific tag for transcriptional activation. Also acetylates non-histone proteins, like NCOA3 and FOXO1. Binds specifically to phosphorylated CREB and enhances its transcriptional activity toward cAMP-responsive genes. Acts as a coactivator of ALX1 in the presence of EP300. Acts as a circadian transcriptional coactivator which enhances the activity of the circadian transcriptional activators: NPAS2-ARNTL/BMAL1 and CLOCK-ARNTL/BMAL1 heterodimers.

Gerd A. Blobel, J. Leukoc. Biol., Apr 2002; 71: 545.

Eric Kalkhoven, Hum. Mol. Genet., Feb 2003; 12: 441 - 450.

Wei-fang Shen, Mol. Cell. Biol., Nov 2001; 21: 7509 - 7522.

Frederick C. Nucifora, Science, Mar 2001; 291: 2423.

Note: This product is for in vitro research use only