

Thyroid Hormone Receptor α Antibody

Catalog No: #33501

Package Size: #33501-1 50ul #33501-2 100ul

Orders: order@signalwayantibody.comSupport: tech@signalwayantibody.com

Description

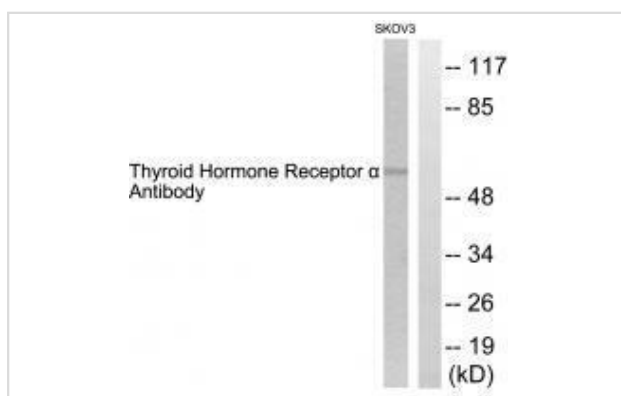
Product Name	Thyroid Hormone Receptor α Antibody
Host Species	Rabbit
Clonality	Polyclonal
Purification	The antibody was affinity-purified from rabbit antiserum by affinity-chromatography using epitope-specific immunogen.
Applications	WB IHC
Species Reactivity	Hu Ms Rt
Specificity	The antibody detects endogenous levels of total thyroid hormone receptor α protein.
Immunogen Type	Peptide
Immunogen Description	Synthesized peptide derived from human thyroid hormone receptor α .
Target Name	Thyroid Hormone Receptor α
Other Names	C-erbA-alpha; EAR-7; EAR7; ERBA1; NR1A1
Accession No.	Swiss-Prot: P10827NCBI Gene ID: 7067
Uniprot	P10827
GeneID	7067;
SDS-PAGE MW	55kd
Concentration	1.0mg/ml
Formulation	Rabbit IgG in phosphate buffered saline (without Mg ²⁺ and Ca ²⁺), pH 7.4, 150mM NaCl, 0.02% sodium azide and 50% glycerol.
Storage	Store at -20°C

Application Details

Western blotting: 1:500~1:3000

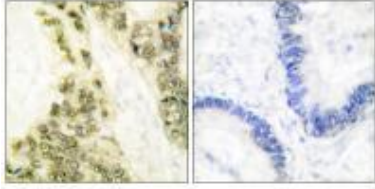
Immunohistochemistry: 1:50~1:100

Images



Western blot analysis of extracts from SKOV3 cells, using Thyroid Hormone Receptor α antibody #33501.

Immunohistochemical analysis of paraffin-embedded human colon carcinoma tissue using Thyroid Hormone Receptor α antibody #33501.



Background

Nuclear hormone receptor that can act as a repressor or activator of transcription. High affinity receptor for thyroid hormones, including triiodothyronine and thyroxine.

D E Banker, Mol. Cell. Biol., Oct 1991; 11: 5079 - 5089.

V. Krishna K. Chatterjee, PNAS, Dec 1989; 86: 9114 - 9118.

GE Muscat, Cell Growth Differ, Apr 1993; 4: 269.

Yan-Yun Liu, J. Biol. Chem., Oct 2003; 278: 38913 - 38920.

Note: This product is for in vitro research use only