

## CD40 Antibody

Catalog No: #33507

Package Size: #33507-1 50ul #33507-2 100ul

Orders: [order@signalwayantibody.com](mailto:order@signalwayantibody.com)Support: [tech@signalwayantibody.com](mailto:tech@signalwayantibody.com)

## Description

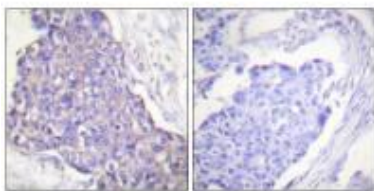
Product Name	CD40 Antibody
Host Species	Rabbit
Clonality	Polyclonal
Purification	The antibody was affinity-purified from rabbit antiserum by affinity-chromatography using epitope-specific immunogen.
Applications	WB IHC
Species Reactivity	Hu
Specificity	The antibody detects endogenous levels of total CD40 protein.
Immunogen Type	Peptide
Immunogen Description	Synthesized peptide derived from C-terminal of human CD40.
Target Name	CD40
Other Names	B-cell surface antigen CD40; Bp50; CD40 antigen; CD40L receptor; CDw40
Accession No.	Swiss-Prot: P25942NCBI Gene ID: 958
Uniprot	P25942
GeneID	958;
SDS-PAGE MW	30kd
Concentration	1.0mg/ml
Formulation	Rabbit IgG in phosphate buffered saline (without Mg <sup>2+</sup> and Ca <sup>2+</sup> ), pH 7.4, 150mM NaCl, 0.02% sodium azide and 50% glycerol.
Storage	Store at -20°C

## Application Details

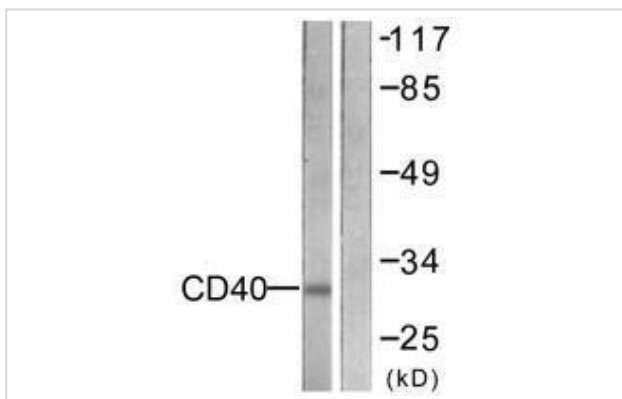
Western blotting: 1:500~1:3000

Immunohistochemistry: 1:50~1:100

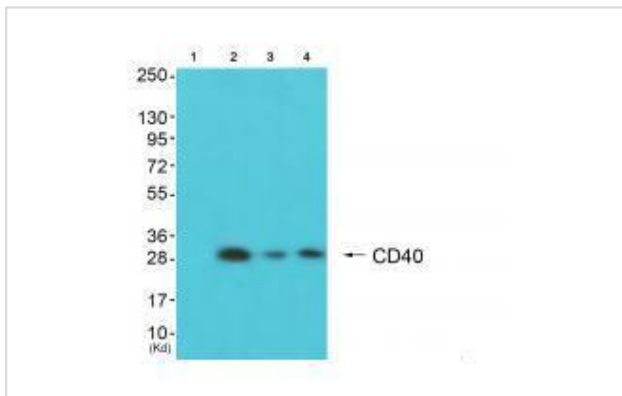
## Images



Immunohistochemistry analysis of paraffin-embedded human breast carcinoma tissue using CD40 antibody #33507.



Western blot analysis of extracts from COS7 cells, using CD40 antibody #33507.



Western blot analysis of extracts from JK cells (Lane 2), K562 cells (Lane 3) and 293 cells (Lane 4), using CD40 antibody #33507. The lane on the left is treated with synthesized peptide.

## Background

Receptor for TNFSF5/CD40LG. Transduces TRAF6- and MAP3K8-mediated signals that activate ERK in macrophages and B cells, leading to induction of immunoglobulin secretion.

Carlos Reyes-Moreno, J. Biol. Chem., May 2007; 10.1074.

Hongwei Qin, Blood, Nov 2005; 106: 3114 - 3122.

Meera J. Nathan, J. Immunol., Jun 2004; 172: 6626 - 6633.

Clare C. Davies, Mol. Cell. Biol., Nov 2005; 25: 9806 - 9819.

Note: This product is for in vitro research use only