

IκB-a(Phospho-Tyr42) Antibody

Catalog No: #11162

Package Size: #11162-1 50ul #11162-2 100ul

Orders: order@signalwayantibody.comSupport: tech@signalwayantibody.com

Description

Product Name	IκB-a(Phospho-Tyr42) Antibody
Host Species	Rabbit
Clonality	Polyclonal
Purification	Antibodies were produced by immunizing rabbits with synthetic peptide and KLH conjugates. Antibodies were purified by affinity-chromatography using epitope-specific peptide.
Applications	WB IHC
Species Reactivity	Hu Ms
Specificity	The antibody detects endogenous levels of IκB-a only when phosphorylated at tyrosine 42.
Immunogen Type	Peptide-KLH
Immunogen Description	Peptide sequence around phosphorylation site of tyrosine 42 (E-E-Y(p)-E-Q) derived from Human IκB-a
Target Name	IκB-a
Modification	Phospho
Other Names	IKBA; MAD-3; NFKBI; NFKBIA;
Accession No.	Swiss-Prot: P25963NCBI Protein: NP_065390.1
Uniprot	P25963
GeneID	4792;
Concentration	1.0mg/ml
Formulation	Supplied at 1.0mg/mL in phosphate buffered saline (without Mg ²⁺ and Ca ²⁺), pH 7.4, 150mM NaCl, 0.02% sodium azide and 50% glycerol.
Storage	Store at -20°C for long term preservation (recommended). Store at 4°C for short term use.

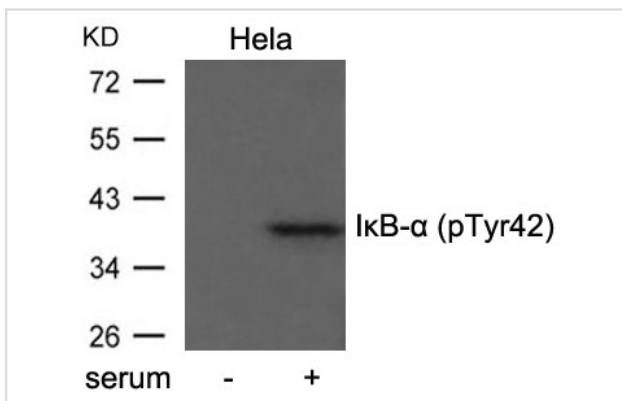
Application Details

Predicted MW: 39kd

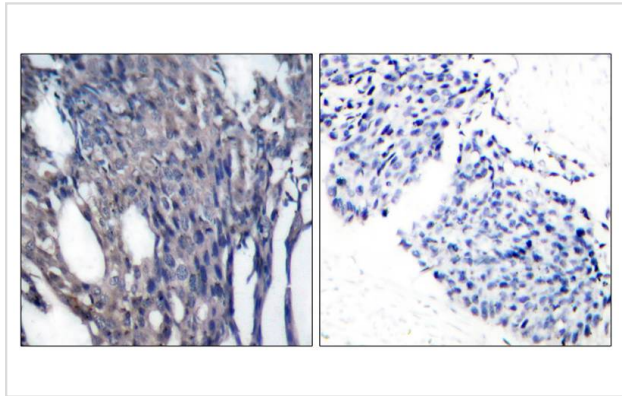
Western blotting: 1:500~1:1000

Immunohistochemistry: 1:50~1:100

Images



Western blot analysis of extract from HeLa cells untreated or treated with serum using IκB-α(Phospho-Tyr42) antibody #11162.



Immunohistochemical analysis of paraffin-embedded human breast carcinoma tissue using IκB-α(phospho-Tyr42) antibody(#11162).

Background

Inhibits the activity of dimeric NF-kappa-B/REL complexes by trapping REL dimers in the cytoplasm through masking of their nuclear localization signals. On cellular stimulation by immune and proinflammatory responses, becomes phosphorylated promoting ubiquitination and degradation, enabling the dimeric RELA to translocate to the nucleus and activate transcription.

B

Note: This product is for in vitro research use only