

## BCKD Antibody

Catalog No: #33570

Package Size: #33570-1 50ul #33570-2 100ul

Orders: order@signalwayantibody.com

Support: tech@signalwayantibody.com

## Description

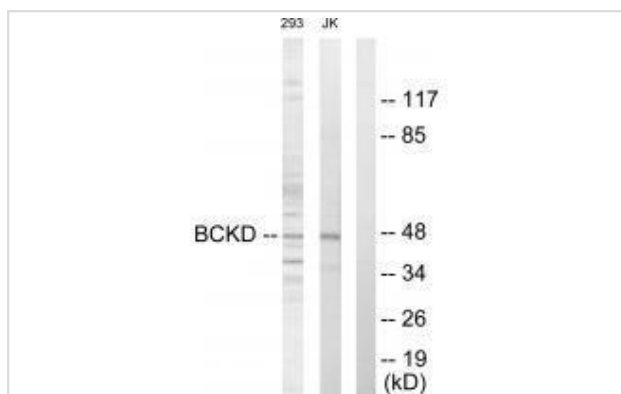
Product Name	BCKD Antibody
Host Species	Rabbit
Clonality	Polyclonal
Purification	The antibody was affinity-purified from rabbit antiserum by affinity-chromatography using epitope-specific immunogen.
Applications	WB IF
Species Reactivity	Hu Ms Rt
Specificity	The antibody detects endogenous levels of total BCKD protein.
Immunogen Type	Peptide
Immunogen Description	Synthesized peptide derived from Internal of human BCKD.
Target Name	BCKD
Other Names	[3-methyl-2-oxobutanoate dehydrogenase [lipoamide]] kinase; mitochondrial [Precursor]; EC 2.7.11.4; Branched-chain alpha-ketoacid dehydrogenase kinase; BCKDHKIN
Accession No.	Swiss-Prot: O14874NCBI Gene ID: 10295
Uniprot	O14874
GeneID	10295;
SDS-PAGE MW	46kd
Concentration	1.0mg/ml
Formulation	Rabbit IgG in phosphate buffered saline (without Mg <sup>2+</sup> and Ca <sup>2+</sup> ), pH 7.4, 150mM NaCl, 0.02% sodium azide and 50% glycerol.
Storage	Store at -20°C

## Application Details

Western blotting: 1:500~1:3000

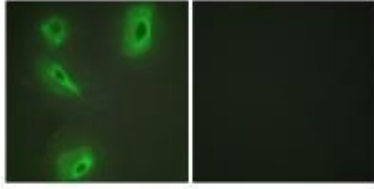
Immunofluorescence: 1:100~1:500

## Images



Western blot analysis of extracts from 293 cells and Jurkat cells, using BCKD antibody #33570.

Immunofluorescence analysis of HeLa cells, using BCKD antibody #33570.



## Background

Catalyzes the phosphorylation and inactivation of the branched-chain alpha-ketoacid dehydrogenase complex, the key regulatory enzyme of the valine, leucine and isoleucine catabolic pathways. Key enzyme that regulate the activity state of the BCKD complex By similarity.

Chuang J.C., Submitted (SEP-1997) to the EMBL/GenBank/DDBJ databases.

The MGC Project Team, Genome Res. 14:2121-2127(2004).

Note: This product is for in vitro research use only