

HAND1 Antibody

Catalog No: #33643

Package Size: #33643-1 50ul #33643-2 100ul

Orders: order@signalwayantibody.comSupport: tech@signalwayantibody.com

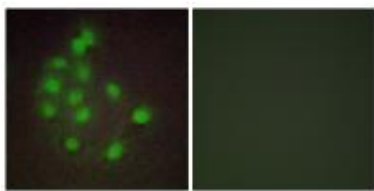
Description

Product Name	HAND1 Antibody
Host Species	Rabbit
Clonality	Polyclonal
Purification	The antibody was affinity-purified from rabbit antiserum by affinity-chromatography using epitope-specific immunogen.
Applications	IF
Species Reactivity	Human, Mouse, Rat
Specificity	The antibody detects endogenous levels of total HAND1 protein.
Immunogen Type	Peptide
Immunogen Description	Synthesized peptide derived from internal of human HAND1.
Target Name	HAND1
Other Names	Heart- and neural crest derivatives-expressed protein 1; Extraembryonic tissues; heart; autonomic nervous system and neural crest derivatives-expressed protein 1; eHAND
Accession No.	Swiss-Prot: O96004NCBI Gene ID: 9421
Uniprot	O96004
GeneID	9421;
SDS-PAGE MW	24kd
Concentration	1.0mg/ml
Formulation	Rabbit IgG in phosphate buffered saline (without Mg ²⁺ and Ca ²⁺), pH 7.4, 150mM NaCl, 0.02% sodium azide and 50% glycerol.
Storage	Store at -20°C

Application Details

Immunofluorescence: 1:100~1:500

Images



Immunofluorescence analysis of A549 cells, using HAND1 antibody #33643.

Background

Transcription factor that plays an essential role in both trophoblast-giant cells differentiation and in cardiac morphogenesis. In the adult, could be required for ongoing expression of cardiac-specific genes. Binds the DNA sequence 5'-NRTCTG-3' (non-canonical E-box) By similarity.

Knoefler M., Gene 224:77-86(1998).

The MGC Project Team, Genome Res. 14:2121-2127(2004).

Note: This product is for in vitro research use only