

## b-catenin Antibody

Catalog No: #21574

Package Size: #21574-1 50ul #21574-2 100ul

Orders: order@signalwayantibody.com

Support: tech@signalwayantibody.com

## Description

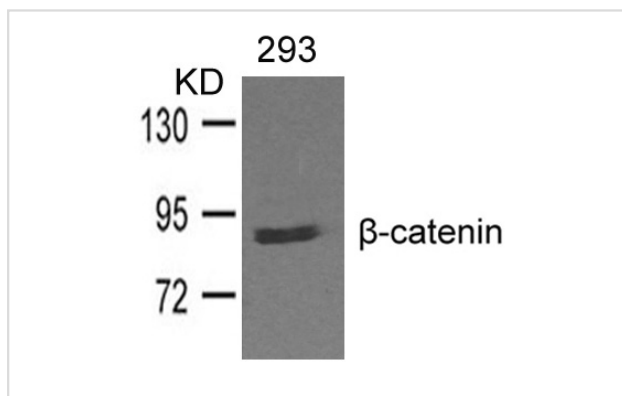
Product Name	b-catenin Antibody
Host Species	Rabbit
Clonality	Polyclonal
Purification	Antibodies were produced by immunizing rabbits with synthetic peptide and KLH conjugates. Antibodies were purified by affinity-chromatography using epitope-specific peptide.
Applications	WB
Species Reactivity	Hu Ms Rt
Specificity	The antibody detects endogenous levels of total b-catenin protein.
Immunogen Type	Peptide-KLH
Immunogen Description	Peptide sequence around aa. 327~331 (C-I-M-R-T) derived from Human b-catenin
Target Name	b-catenin
Other Names	CTNNB1; CATNB; CTNB1; CTNNB;
Accession No.	Swiss-Prot: P35222NCBI Protein: NP_001091679.1
Uniprot	P35222
GeneID	1499;
Concentration	1.0mg/ml
Formulation	Supplied at 1.0mg/mL in phosphate buffered saline (without Mg <sup>2+</sup> and Ca <sup>2+</sup> ), pH 7.4, 150mM NaCl, 0.02% sodium azide and 50% glycerol.
Storage	Store at -20°C for long term preservation (recommended). Store at 4°C for short term use.

## Application Details

Predicted MW: 92kd

Western blotting: 1:500~1:1000

## Images



Western blot analysis of extracts from 293 cells and using b-catenin Antibody #21574.

## Background

---

Involved in the regulation of cell adhesion and in signal transduction through the Wnt pathway.

---

Note: This product is for in vitro research use only