

IRX3 Antibody

Catalog No: #33836

Package Size: #33836-1 50ul #33836-2 100ul

Orders: order@signalwayantibody.comSupport: tech@signalwayantibody.com

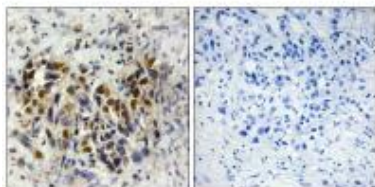
Description

Product Name	IRX3 Antibody
Host Species	Rabbit
Clonality	Polyclonal
Purification	The antibody was affinity-purified from rabbit antiserum by affinity-chromatography using epitope-specific immunogen.
Applications	IHC
Species Reactivity	Hu Ms
Specificity	The antibody detects endogenous levels of total IRX3 protein.
Immunogen Type	Peptide
Immunogen Description	Synthesized peptide derived from internal of human IRX3.
Target Name	IRX3
Other Names	iroquois homeobox 3; IRX-1;
Accession No.	Swiss-Prot: P78415NCBI Gene ID: 79191
Uniprot	P78415
GeneID	79191;
SDS-PAGE MW	52kd
Concentration	1.0mg/ml
Formulation	Rabbit IgG in phosphate buffered saline (without Mg ²⁺ and Ca ²⁺), pH 7.4, 150mM NaCl, 0.02% sodium azide and 50% glycerol.
Storage	Store at -20°C

Application Details

Immunohistochemistry: 1:50~1:100

Images



Immunohistochemistry analysis of paraffin-embedded human breast carcinoma tissue, using IRX3 antibody #33836.

Background

Transcription factor. Involved in SHH-dependent neural patterning. Together with NKX2-2 and NKX6-1 acts to restrict the generation of motor neurons to the appropriate region of the neural tube. Belongs to the class I proteins of neuronal progenitor factors, which are repressed by SHH signals.

Involved in the transcriptional repression of MNX1 in non-motor neuron cells By similarity.

Hansen L., Submitted (JUL-2003) to the EMBL/GenBank/DDBJ databases.

The MGC Project Team, Genome Res. 14:2121-2127(2004).

Lewis M.T., Submitted (MAR-1997) to the EMBL/GenBank/DDBJ databases.

Note: This product is for in vitro research use only