

TFE3 Antibody

Catalog No: #21431

Package Size: #21431-1 50ul #21431-2 100ul

Orders: order@signalwayantibody.com

Support: tech@signalwayantibody.com

Description

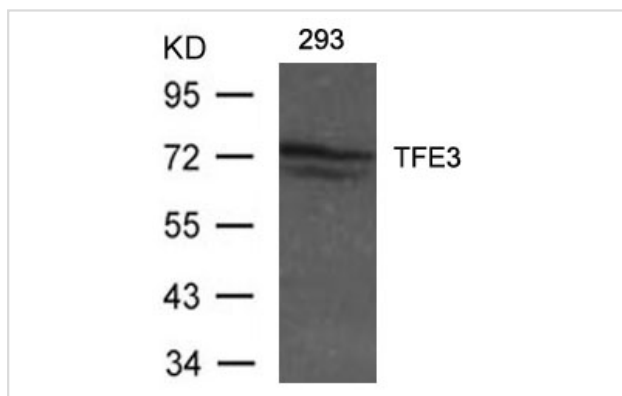
Product Name	TFE3 Antibody
Host Species	Rabbit
Clonality	Polyclonal
Purification	Antibodies were produced by immunizing rabbits with synthetic peptide and KLH conjugates. Antibodies were purified by affinity-chromatography using epitope-specific peptide.
Applications	WB
Species Reactivity	Hu Ms Rt
Specificity	The antibody detects endogenous levels of total TFE3 protein.
Immunogen Type	Peptide-KLH
Immunogen Description	Peptide sequence around aa.303~307 (L-D-V-Y-S) derived from Human TFE3.
Target Name	TFE3
Other Names	BHLHE33; TFEA; RCCP2
Accession No.	Swiss-Prot: P19532NCBI Protein: NP_006512.2
Uniprot	P19532
GeneID	7030;
Concentration	1.0mg/ml
Formulation	Supplied at 1.0mg/mL in phosphate buffered saline (without Mg ²⁺ and Ca ²⁺), pH 7.4, 150mM NaCl, 0.02% sodium azide and 50% glycerol.
Storage	Store at -20°C for long term preservation (recommended). Store at 4°C for short term use.

Application Details

Predicted MW: 70kd

Western blotting: 1:500~1:1000

Images



Western blot analysis of extracts from 293 cells using TFE3 Antibody #21431.

Background

Transcription factor that specifically recognizes and binds E-box sequences (3'-CANNTG-5'). Efficient DNA-binding requires dimerization with itself or with another MIT/TFE family member such as TFEB or MITF. In association with TFEB, activates the expression of CD40L in T-cells, thereby playing a role in T-cell-dependent antibody responses in activated CD4+ T-cells and thymus-dependent humoral immunity. Specifically recognizes the MUE3 box, a subset of E-boxes, present in the immunoglobulin enhancer. It also binds very well to a USF/MLTF site.

Clark J., Lu Y.-J., Sidhar S.K., Parker C., Gill S. *Oncogene* 15:2233-2239(1997) Weterman M.A.J., Wilbrink M., *Proc. Natl. Acad. Sci. U.S.A.* 93:15294-15298(1996)

Note: This product is for in vitro research use only