

DUSP6 Antibody

Catalog No: #33916

Package Size: #33916-1 50ul #33916-2 100ul

Orders: order@signalwayantibody.comSupport: tech@signalwayantibody.com

Description

Product Name	DUSP6 Antibody
Host Species	Rabbit
Clonality	Polyclonal
Purification	The antibody was affinity-purified from rabbit antiserum by affinity-chromatography using epitope-specific immunogen.
Applications	WB IHC IF
Species Reactivity	Hu Ms
Specificity	The antibody detects endogenous levels of total DUSP6 protein.
Immunogen Type	Peptide
Immunogen Description	Synthesized peptide derived from internal of human DUSP6.
Target Name	DUSP6
Other Names	dual specificity protein phosphatase 6; dual specificity protein phosphatase PYST1; DUS6; DUSP6; EC 3.1.3.16
Accession No.	Swiss-Prot: Q16828NCBI Gene ID: 1848
Uniprot	Q16828
GeneID	1848;
SDS-PAGE MW	42kd
Concentration	1.0mg/ml
Formulation	Rabbit IgG in phosphate buffered saline (without Mg ²⁺ and Ca ²⁺), pH 7.4, 150mM NaCl, 0.02% sodium azide and 50% glycerol.
Storage	Store at -20°C

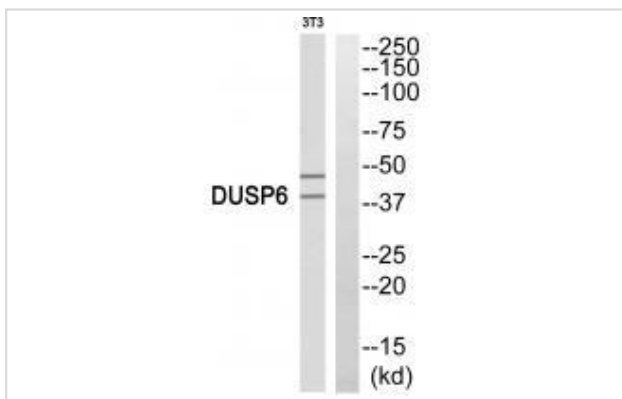
Application Details

Western blotting: 1:500~1:3000

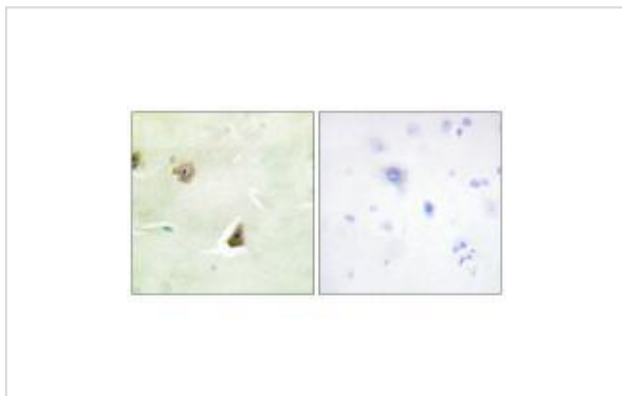
Immunohistochemistry: 1:50~1:100

Immunofluorescence: 1:100~1:500

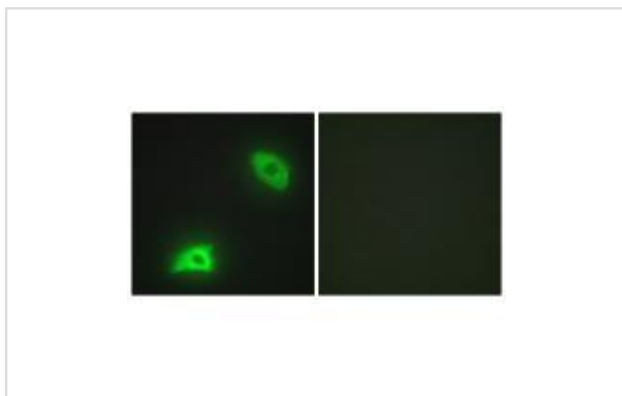
Images



Western blot analysis of extracts from 3T3 cells, using DUSP6 antibody #33916.



Immunohistochemistry analysis of paraffin-embedded human brain tissue, using DUSP6 antibody #33916.



Immunofluorescence analysis of HeLa cells, using DUSP6 antibody #33916.

Background

Inactivates MAP kinases. Has a specificity for the ERK family.

Groom L.A., EMBO J. 15:3621-3632(1996).

Furukawa T., Cytogenet. Cell Genet. 82:156-159(1998).

Stewart A.E., Nat. Struct. Biol. 6:174-181(1999).

Note: This product is for in vitro research use only