

LMTK2 Antibody

Catalog No: #33961

Package Size: #33961-1 50ul #33961-2 100ul

Orders: order@signalwayantibody.com

Support: tech@signalwayantibody.com

Description

Product Name	LMTK2 Antibody
Host Species	Rabbit
Clonality	Polyclonal
Purification	The antibody was affinity-purified from rabbit antiserum by affinity-chromatography using epitope-specific immunogen.
Applications	WB IHC IF
Species Reactivity	Human
Specificity	The antibody detects endogenous levels of total LMTK2 protein.
Immunogen Type	Peptide
Immunogen Description	Synthesized peptide derived from internal of human LMTK2.
Target Name	LMTK2
Other Names	2900041G10Rik; BREK; cprk; EC 2.7.11.1; KIAA1079
Accession No.	Swiss-Prot: Q8IWU2NCBI Gene ID: 22853
Uniprot	Q8IWU2
GeneID	22853;
SDS-PAGE MW	164kd
Concentration	1.0mg/ml
Formulation	Rabbit IgG in phosphate buffered saline (without Mg ²⁺ and Ca ²⁺), pH 7.4, 150mM NaCl, 0.02% sodium azide and 50% glycerol.
Storage	Store at -20°C

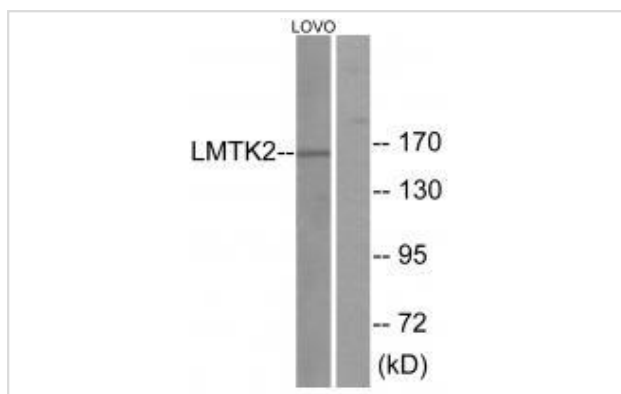
Application Details

Western blotting: 1:500~1:3000

Immunohistochemistry: 1:50~1:100

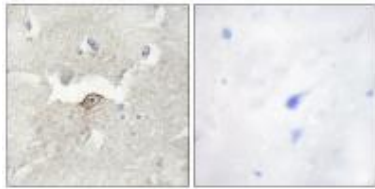
Immunofluorescence: 1:100~1:500

Images

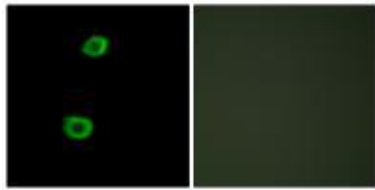


Western blot analysis of extracts from LOVO cells, using LMTK2 antibody #33961.

Immunohistochemistry analysis of paraffin-embedded human brain tissue using LMTK2 antibody #33961.



Immunofluorescence analysis of HepG2 cells, using LMTK2 antibody #33961.



Background

Phosphorylates PPP1C, phosphorylase b and CFTR.

Wang H., J. Biol. Chem. 277:49605-49612(2002).

Kikuno R., DNA Res. 6:197-205(1999).

Hillier L.W., Nature 424:157-164(2003).

Note: This product is for in vitro research use only