

## AZI2 Antibody

Catalog No: #34065

Package Size: #34065-1 50ul #34065-2 100ul

Orders: order@signalwayantibody.com

Support: tech@signalwayantibody.com

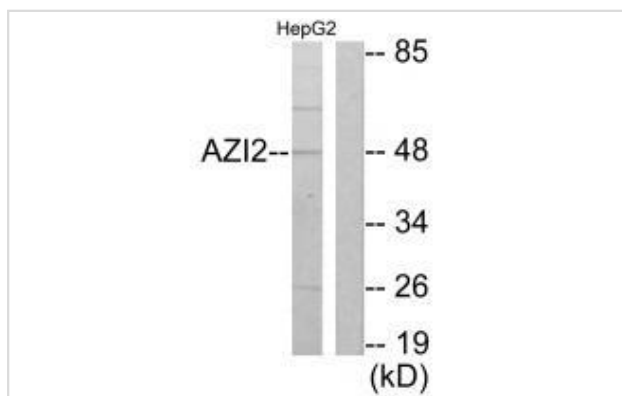
## Description

Product Name	AZI2 Antibody
Host Species	Rabbit
Clonality	Polyclonal
Purification	The antibody was affinity-purified from rabbit antiserum by affinity-chromatography using epitope-specific immunogen.
Applications	WB
Species Reactivity	Hu Ms Rt
Specificity	The antibody detects endogenous levels of total AZI2 protein.
Immunogen Type	Peptide
Immunogen Description	Synthesized peptide derived from N-terminal of human AZI2.
Target Name	AZI2
Other Names	5-azacytidine-induced protein 2; NF-kappa-B-activating kinase-associated protein 1; Nak-associated protein 1; TILP; AZI2
Accession No.	Swiss-Prot: Q9H6S1NCBI Gene ID: 64343
Uniprot	Q9H6S1
GeneID	64343;
SDS-PAGE MW	48kd
Concentration	1.0mg/ml
Formulation	Rabbit IgG in phosphate buffered saline (without Mg <sup>2+</sup> and Ca <sup>2+</sup> ), pH 7.4, 150mM NaCl, 0.02% sodium azide and 50% glycerol.
Storage	Store at -20°C

## Application Details

Western blotting: 1:500~1:3000

## Images



Western blot analysis of extracts from HepG2 cells, using AZI2 antibody #34065.

## Background

---

Adapter protein which binds TBK1 and IKKε playing a role in antiviral innate immunity. Activates serine/threonine-protein kinase TBK1 and facilitates its oligomerization. Enhances the phosphorylation of NF-κB p65 subunit RELA by TBK1. Promotes TBK1-induced as well as TNF-α or PMA-induced activation of NF-κB. Participates in IFNβ promoter activation via TICAM1.

Fujita F., Mol. Cell. Biol. 23:7780-7793(2003).

Ota T., Nat. Genet. 36:40-45(2004).

Sasai M., J. Immunol. 174:27-30(2005).

---

Note: This product is for in vitro research use only