

CHKB Antibody

Catalog No: #34125

Package Size: #34125-1 50ul #34125-2 100ul

Orders: order@signalwayantibody.com

Support: tech@signalwayantibody.com

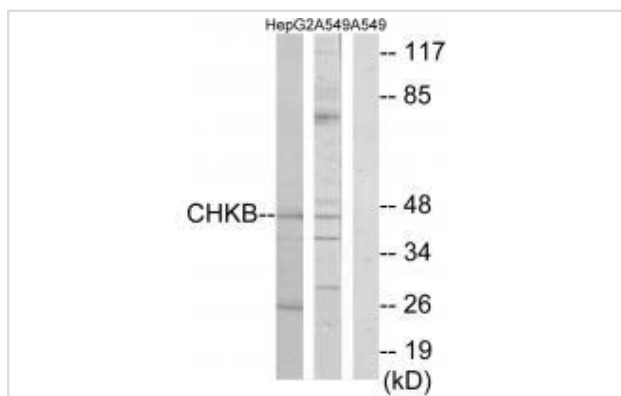
Description

| | |
|-----------------------|--|
| Product Name | CHKB Antibody |
| Host Species | Rabbit |
| Clonality | Polyclonal |
| Purification | The antibody was affinity-purified from rabbit antiserum by affinity-chromatography using epitope-specific immunogen. |
| Applications | WB |
| Species Reactivity | Hu |
| Specificity | The antibody detects endogenous levels of total CHKB protein. |
| Immunogen Type | Peptide |
| Immunogen Description | Synthesized peptide derived from internal of human CHKB. |
| Target Name | CHKB |
| Other Names | Choline/ethanolamine kinase; Choline kinase beta (EC 2.7.1.32)(CK); Ethanolamine kinase (EC 2.7.1.82)(EK); CHKB; CHETK |
| Accession No. | Swiss-Prot: Q9Y259NCBI Gene ID: 1120 |
| Uniprot | Q9Y259 |
| GeneID | 1120; |
| SDS-PAGE MW | 45kd |
| Concentration | 1.0mg/ml |
| Formulation | Rabbit IgG in phosphate buffered saline (without Mg ²⁺ and Ca ²⁺), pH 7.4, 150mM NaCl, 0.02% sodium azide and 50% glycerol. |
| Storage | Store at -20°C |

Application Details

Western blotting: 1:500~1:3000

Images



Western blot analysis of extracts from HepG2 cells and A549 cells, using CHKB antibody #34125.

Background

Has a key role in phospholipid biosynthesis. Catalyzes the first step in phosphatidylethanolamine biosynthesis. Phosphorylates ethanolamine, and can also act on choline (in vitro). Has higher activity with ethanolamine. May not significantly contribute to in vivo phosphatidylcholine biosynthesis.

Yamazaki N., J. Biol. Chem. 275:31739-31746(2000).

Collins J.E., Genome Biol. 5:RESEARCH84.1-RESEARCH84.11(2004).

Yu L.-R., J. Proteome Res. 6:4150-4162(2007).

Note: This product is for in vitro research use only