

## ADCY8 Antibody

Catalog No: #34163

Package Size: #34163-1 50ul #34163-2 100ul

Orders: [order@signalwayantibody.com](mailto:order@signalwayantibody.com)Support: [tech@signalwayantibody.com](mailto:tech@signalwayantibody.com)

## Description

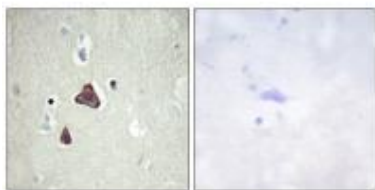
Product Name	ADCY8 Antibody
Host Species	Rabbit
Clonality	Polyclonal
Purification	The antibody was affinity-purified from rabbit antiserum by affinity-chromatography using epitope-specific immunogen.
Applications	IHC IF
Species Reactivity	Hu
Specificity	The antibody detects endogenous levels of total ADCY8 protein.
Immunogen Type	Peptide
Immunogen Description	Synthesized peptide derived from internal of human ADCY8.
Target Name	ADCY8
Other Names	Adenylate cyclase type 8; EC 4.6.1.1; Adenylate cyclase type VIII; ATP pyrophosphate-lyase 8; Adenylyl cyclase 8
Accession No.	Swiss-Prot: P40145NCBI Gene ID: 114
Uniprot	P40145
GeneID	114;
SDS-PAGE MW	140kd
Concentration	1.0mg/ml
Formulation	Rabbit IgG in phosphate buffered saline (without Mg <sup>2+</sup> and Ca <sup>2+</sup> ), pH 7.4, 150mM NaCl, 0.02% sodium azide and 50% glycerol.
Storage	Store at -20°C

## Application Details

Immunohistochemistry: 1:50~1:100

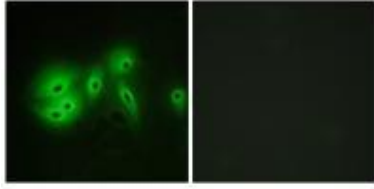
Immunofluorescence: 1:100~1:500

## Images



Immunohistochemistry analysis of paraffin-embedded human brain tissue, using ADCY8 antibody #34163.

Immunofluorescence analysis of A549 cells, using ADCY8 antibody #34163.



## Background

This is a membrane-bound, calcium-stimulable adenylyl cyclase. May be involved in learning, in memory and in drug dependence By similarity.

Defer N., FEBS Lett. 351:109-113(1994).

Parma J., Biochem. Biophys. Res. Commun. 179:455-462(1991).

Sjoeblom T., Science 314:268-274(2006).

Note: This product is for in vitro research use only