

CDH17 Antibody

Catalog No: #34177

Package Size: #34177-1 50ul #34177-2 100ul

Orders: order@signalwayantibody.com

Support: tech@signalwayantibody.com

Description

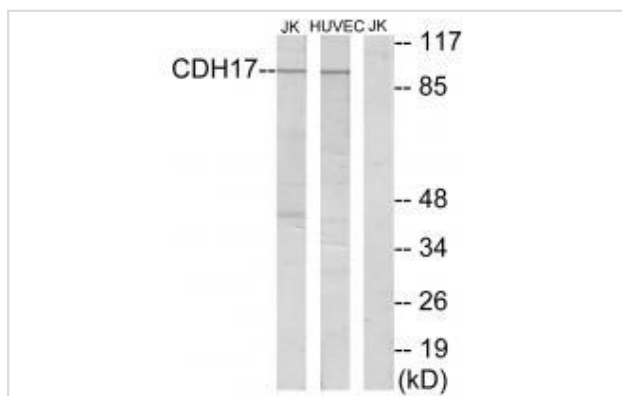
Product Name	CDH17 Antibody
Host Species	Rabbit
Clonality	Polyclonal
Purification	The antibody was affinity-purified from rabbit antiserum by affinity-chromatography using epitope-specific immunogen.
Applications	WB IF
Species Reactivity	Hu
Specificity	The antibody detects endogenous levels of total CDH17 protein.
Immunogen Type	Peptide
Immunogen Description	Synthesized peptide derived from internal of human CDH17.
Target Name	CDH17
Other Names	CAD17; CADH; Intestinal peptide-associated transporter HPT-1; LI-cad; LI-cadherin
Accession No.	Swiss-Prot: Q12864NCBI Gene ID: 1015
Uniprot	Q12864
GeneID	1015;
SDS-PAGE MW	99kd
Concentration	1.0mg/ml
Formulation	Rabbit IgG in phosphate buffered saline (without Mg ²⁺ and Ca ²⁺), pH 7.4, 150mM NaCl, 0.02% sodium azide and 50% glycerol.
Storage	Store at -20°C

Application Details

Western blotting: 1:500~1:3000

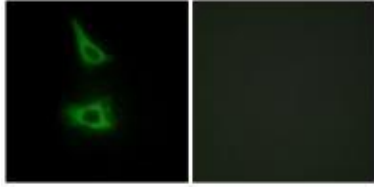
Immunofluorescence: 1:100~1:500

Images



Western blot analysis of extracts from Jurkat cells and HUVEC cells, using CDH17 antibody #34177.

Immunofluorescence analysis of HeLa cells, using CDH17 antibody #34177.



Background

Cadherins are calcium-dependent cell adhesion proteins. They preferentially interact with themselves in a homophilic manner in connecting cells; cadherins may thus contribute to the sorting of heterogeneous cell types. LI-cadherin may have a role in the morphological organization of liver and intestine. Involved in intestinal peptide transport.

Dantzig A.H., *Science* 264:430-433(1994).

Boettinger A., Submitted (DEC-1994) to the EMBL/GenBank/DDBJ databases.

Beausoleil S.A., *Proc. Natl. Acad. Sci. U.S.A.* 101:12130-12135(2004).

Note: This product is for in vitro research use only