

CARD11 Antibody

Catalog No: #34184

Package Size: #34184-1 50ul #34184-2 100ul

Orders: order@signalwayantibody.com

Support: tech@signalwayantibody.com

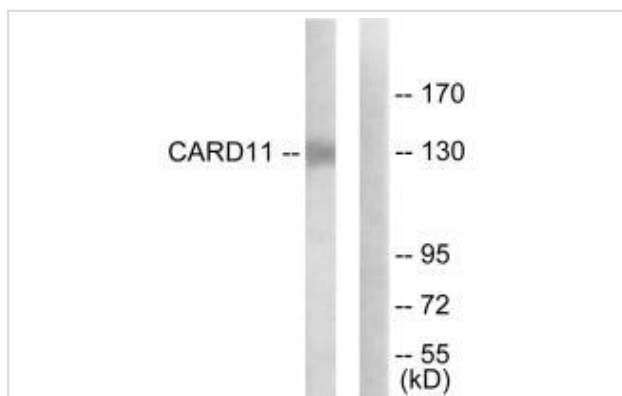
Description

Product Name	CARD11 Antibody
Host Species	Rabbit
Clonality	Polyclonal
Purification	The antibody was affinity-purified from rabbit antiserum by affinity-chromatography using epitope-specific immunogen.
Applications	WB
Species Reactivity	Hu Ms
Specificity	The antibody detects endogenous levels of total CARD11 protein.
Immunogen Type	Peptide
Immunogen Description	Synthesized peptide derived from internal of human CARD11.
Target Name	CARD11
Other Names	Caspase recruitment domain-containing protein 11; CARD-containing MAGUK protein 3; Carma 1; CARD11; CARMA1
Accession No.	Swiss-Prot: Q9BXL7NCBI Gene ID: 84433
Uniprot	Q9BXL7
GeneID	84433;
SDS-PAGE MW	130kd
Concentration	1.0mg/ml
Formulation	Rabbit IgG in phosphate buffered saline (without Mg ²⁺ and Ca ²⁺), pH 7.4, 150mM NaCl, 0.02% sodium azide and 50% glycerol.
Storage	Store at -20°C

Application Details

Western blotting: 1:500~1:3000

Images



Western blot analysis of extracts from COLO205 cells, using CARD11 antibody #34184.

Background

Involved in the costimulatory signal essential for T-cell receptor (TCR)-mediated T-cell activation. Its binding to DPP4 induces T-cell proliferation and NF-kappa-B activation in a T-cell receptor/CD3-dependent manner. Activates NF-kappa-B via BCL10 and IKK. Stimulates the phosphorylation of BCL10.

Bertin J., J. Biol. Chem. 276:11877-11882(2001).

Gaide O., FEBS Lett. 496:121-127(2001).

Hillier L.W., Nature 424:157-164(2003).

Note: This product is for in vitro research use only