

H-NUC Antibody

Catalog No: #34190

Package Size: #34190-1 50ul #34190-2 100ul

Orders: order@signalwayantibody.com

Support: tech@signalwayantibody.com

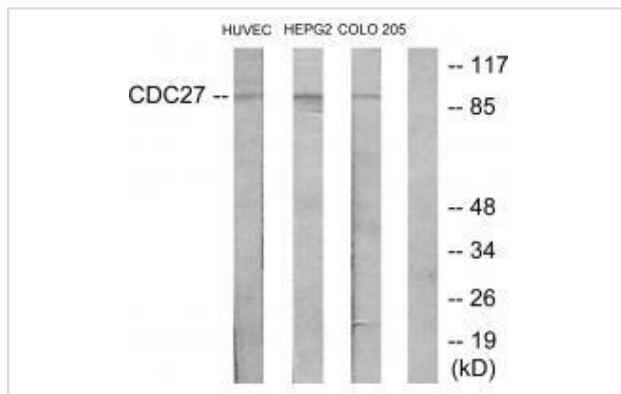
Description

Product Name	H-NUC Antibody
Host Species	Rabbit
Clonality	Polyclonal
Purification	The antibody was affinity-purified from rabbit antiserum by affinity-chromatography using epitope-specific immunogen.
Applications	WB
Species Reactivity	Hu Ms Rt
Specificity	The antibody detects endogenous levels of total H-NUC protein.
Immunogen Type	Peptide
Immunogen Description	Synthesized peptide derived from internal of human H-NUC.
Target Name	H-NUC
Other Names	CDC27Hs; Cell division cycle protein 27 homolog; H-NUC;
Accession No.	Swiss-Prot: P30260NCBI Gene ID: 996
Uniprot	P30260
GeneID	996;
SDS-PAGE MW	92kd
Concentration	1.0mg/ml
Formulation	Rabbit IgG in phosphate buffered saline (without Mg ²⁺ and Ca ²⁺), pH 7.4, 150mM NaCl, 0.02% sodium azide and 50% glycerol.
Storage	Store at -20°C

Application Details

Western blotting: 1:500~1:3000

Images



Western blot analysis of extracts from HUVEC cells, HepG2 cells and COLO205 cells, using H-NUC antibody #34190.

Background

Component of the anaphase promoting complex/cyclosome (APC/C), a cell cycle-regulated E3 ubiquitin ligase that controls progression through mitosis and the G1 phase of the cell cycle. The APC/C complex acts by mediating ubiquitination and subsequent degradation of target proteins: it mainly mediates the formation of 'Lys-11'-linked polyubiquitin chains and, to a lower extent, the formation of 'Lys-48'- and 'Lys-63'-linked polyubiquitin chains.

Tugendreich S., Proc. Natl. Acad. Sci. U.S.A. 90:10031-10035(1993).

Chen P.L., Cell Growth Differ. 6:199-210(1995).

Kraft C., EMBO J. 22:6598-6609(2003).

Note: This product is for in vitro research use only