

## EEA1 Antibody

Catalog No: #21601

Package Size: #21601-1 50ul #21601-2 100ul

Orders: order@signalwayantibody.com

Support: tech@signalwayantibody.com

## Description

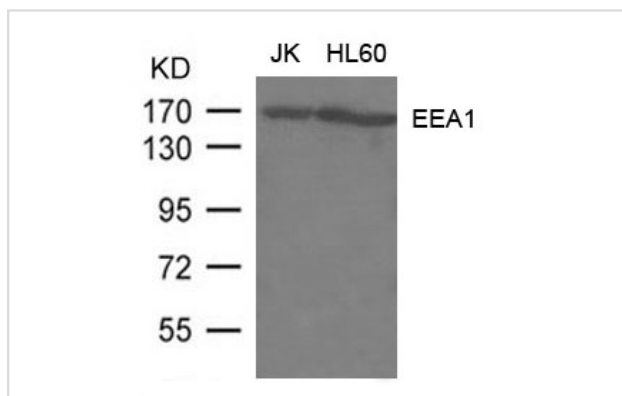
Product Name	EEA1 Antibody
Host Species	Rabbit
Clonality	Polyclonal
Purification	Antibodies were produced by immunizing rabbits with synthetic peptide and KLH conjugates. Antibodies were purified by affinity-chromatography using epitope-specific peptide.
Applications	WB
Species Reactivity	Hu Ms Rt
Specificity	The antibody detects endogenous level of total EEA1 protein.
Immunogen Type	Peptide-KLH
Immunogen Description	Peptide sequence around aa.12~16(R-V-G-S-Q)derived from Human EEA1.
Target Name	EEA1
Other Names	MST105; ZFYVE2; MSTP105
Accession No.	Swiss-Prot: Q15075NCBI Protein: NP_003557.2
Uniprot	Q15075
GenelD	8411;
Concentration	1.0mg/ml
Formulation	Supplied at 1.0mg/mL in phosphate buffered saline (without Mg <sup>2+</sup> and Ca <sup>2+</sup> ), pH 7.4, 150mM NaCl, 0.02% sodium azide and 50% glycerol.
Storage	Store at -20°C for long term preservation (recommended). Store at 4°C for short term use.

## Application Details

Predicted MW: 170kd

Western blotting: 1:500~1:1000

## Images



Western blot analysis of extract from JK, HL-60 cells using EEA1 Antibody #21601

## Background

---

Binds phospholipid vesicles containing phosphatidylinositol 3-phosphate and participates in endosomal trafficking.

---

Note: This product is for in vitro research use only