

CD11c Antibody

Catalog No: #21491

Package Size: #21491-1 50ul #21491-2 100ul

Orders: order@signalwayantibody.com

Support: tech@signalwayantibody.com

Description

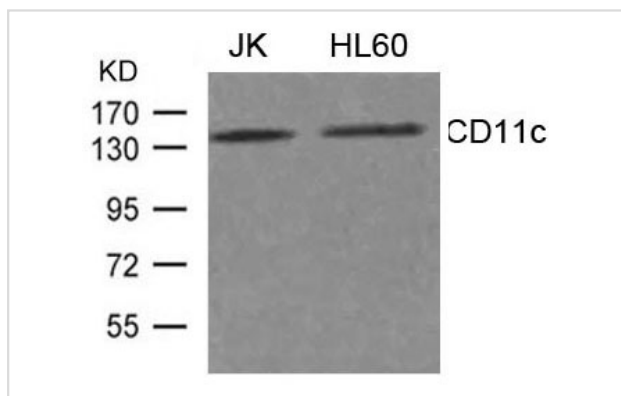
Product Name	CD11c Antibody
Host Species	Rabbit
Clonality	Polyclonal
Purification	Antibodies were produced by immunizing rabbits with synthetic peptide and KLH conjugates. Antibodies were purified by affinity-chromatography using epitope-specific peptide.
Applications	WB
Species Reactivity	Hu
Specificity	The antibody detects endogenous level of total CD11c protein.
Immunogen Type	Peptide-KLH
Immunogen Description	Peptide sequence around aa.1155~1159(Q-T-P-S-P)derived from Human CD11c.
Target Name	CD11c
Other Names	SLEB6; ITGAX;
Accession No.	Swiss-Prot: P20702NCBI Protein: NP_000878.2
Uniprot	P20702
GeneID	3687;
Concentration	1.0mg/ml
Formulation	Supplied at 1.0mg/mL in phosphate buffered saline (without Mg ²⁺ and Ca ²⁺), pH 7.4, 150mM NaCl, 0.02% sodium azide and 50% glycerol.
Storage	Store at -20°C for long term preservation (recommended). Store at 4°C for short term use.

Application Details

Predicted MW: 145kd

Western blotting: 1:500~1:1000

Images



Western blot analysis of extract from JK, HL-60 cells using CD11c Antibody #21491

Background

Integrin α -X/ β -2 is a receptor for fibrinogen. It recognizes the sequence G-P-R in fibrinogen. It mediates cell-cell interaction during inflammatory responses. It is especially important in monocyte adhesion and chemotaxis.

Chen R., Jiang X., Sun D., Han G., Wang F., Ye M., Wang L., Zou H.J. Proteome Res. 8:651-661(2009)

Note: This product is for in vitro research use only