

CCR7(CD197) Antibody

Catalog No: #21500

Package Size: #21500-1 50ul #21500-2 100ul

Orders: order@signalwayantibody.com

Support: tech@signalwayantibody.com

Description

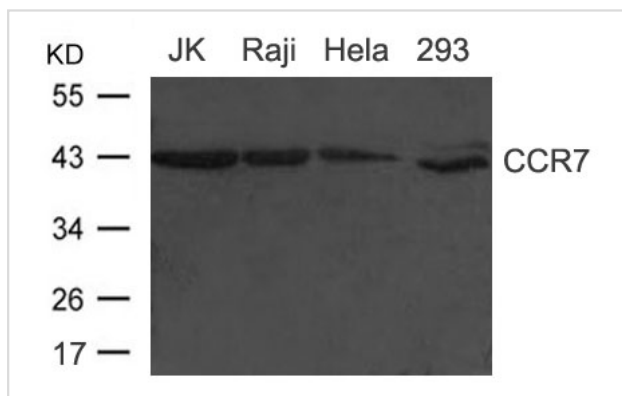
| | |
|-----------------------|-------------------------------------------------------------------------------------------------------------------------------------------------------------------------------|
| Product Name | CCR7(CD197) Antibody |
| Host Species | Rabbit |
| Clonality | Polyclonal |
| Purification | Antibodies were produced by immunizing rabbits with synthetic peptide and KLH conjugates. Antibodies were purified by affinity-chromatography using epitope-specific peptide. |
| Applications | WB |
| Species Reactivity | Hu |
| Specificity | The antibody detects endogenous level of total CCR7(CD197) protein. |
| Immunogen Type | Peptide-KLH |
| Immunogen Description | Peptide sequence around aa.29~33(T-D-D-Y-I) derived from Human CCR7(CD197). |
| Target Name | CCR7(CD197) |
| Other Names | BLR2; EBI1; CDw197; CMKBR7; |
| Accession No. | Swiss-Prot: P32248NCBI Protein: NP_001829.1 |
| Uniprot | P32248 |
| GeneID | 1236; |
| Concentration | 1.0mg/ml |
| Formulation | Supplied at 1.0mg/mL in phosphate buffered saline (without Mg ²⁺ and Ca ²⁺), pH 7.4, 150mM NaCl, 0.02% sodium azide and 50% glycerol. |
| Storage | Store at -20°C for long term preservation (recommended). Store at 4°C for short term use. |

Application Details

Predicted MW: 43kd

Western blotting: 1:500~1:1000

Images



Western blot analysis of extract from JK, Raji, 293 and HeLa cells using CCR7(CD197) Antibody #21500

Background

Receptor for the MIP-3-beta chemokine. Probable mediator of EBV effects on B-lymphocytes or of normal lymphocyte functions.

Birkenbach M.P., Josefsen K., Yalamanchili R.R., Lenoir G.M., Kieff E.J. *Virology*. 67:2209-2220(1993)

Note: This product is for in vitro research use only